

gp130 (S778) polyclonal antibody

Catalog: BS1520

Host: Rabbit

Reactivity: Human, Mouse

BackGround:

IL-6 activates intracellular signaling through binding a receptor consisting of an 80 kDa ligand-binding protein (IL-6R) and a second protein of 130 kDa. IL-6 first binds to IL-6R which subsequently associates with a gp130 dimer. The active signaling complex consists of at minimum IL-6, IL-6R and a dimer of two gp130 proteins that are linked by a disulfide bond. A soluble form of IL-6R is generated by proteolytic cleavage of the membrane-bound precursor and can function as an agonistic molecule that can actively participate in cell-to-cell signaling. The second subunit of the IL-6 complex, gp130, also functions as a component of several additional receptor complexes including leukemia inhibitory factor (LIF), oncostatin M (OSM), ciliary neurotrophic factor (CNTF) and IL-11. LIF binds to the LIF receptor with low affinity and to a complex of the LIF receptor and gp130 with high affinity, while OSM appears to bind to gp130 with low affinity and to a complex of gp130 and the LIF receptor with high affinity.

Product:

1 mg/ml in Phosphate buffered saline (PBS) with 0.05% sodium azide, approx. pH 7.2.

Molecular Weight:

~ 104, 160 kDa

Swiss-Prot:

P40189

Purification&Purity:

The antibody was affinity-purified from rabbit antiserum by affinity-chromatography using epitope-specific immunogen and the purity is > 95% (by SDS-PAGE).

Applications:

WB: 1:500~1:1000

IHC: 1:50~1:200

IF: 1:50~1:200

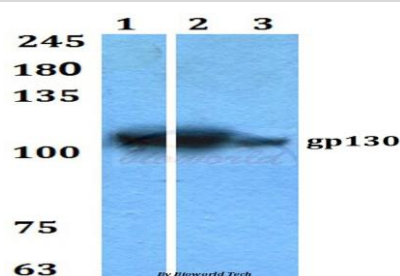
Storage&Stability:

Store at 4 °C short term. Aliquot and store at -20 °C long term. Avoid freeze-thaw cycles.

Specificity:

gp130 (S778) polyclonal antibody detects endogenous levels of gp130 protein.

DATA:

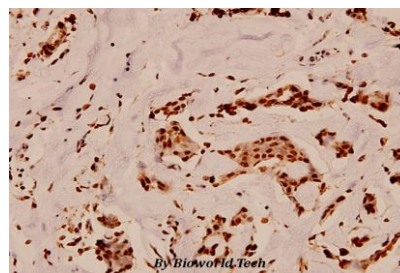


Western blot (WB) analysis of gp130 (S778) polyclonal antibody at 1:500 dilution

Lane1:HEK293T whole cell lysate

Lane2:Raw264.7 whole cell lysate

Lane3:PC12 whole cell lysate



Immunohistochemistry (IHC) analyzes of gp130 (S778) pAb in paraffin-embedded human breast carcinoma tissue at 1:100.

Note:

For research use only, not for use in diagnostic procedure.

Bioworld Technology, Inc.

Add: 1660 South Highway 100, Suite 500 St. Louis Park, MN 55416, USA.

Email: info@bioworld.com

Tel: 6123263284

Fax: 6122933841

Bioworld technology, co. Ltd.

Add: No 9, weidi road Qixia District Nanjing, 210046, P. R. China.

Email: info@biogot.com

Tel: 0086-025-68037686

Fax: 0086-025-68035151