

Lck (L186) polyclonal antibody

Catalog: BS1548

Host: Rabbit

Reactivity: Human, Mouse, Rat

BackGround:

Src is the human homolog of the v-Src gene of the Rous sarcoma virus, also called avian sarcoma virus or ASV. Src was the first proto-oncogenic non-receptor tyrosine kinase characterized in human. By virtue of common structural motifs, the Src family is composed of nine members in vertebrates, including Src, Yes, Fgr, Frk, Fyn, Lyn, Hck, Lck and Blk. Src-family kinases transduce signals that are involved in the control of a variety of cellular processes, including proliferation, differentiation, motility, and adhesion.

Product:

1 mg/ml in Phosphate buffered saline (PBS) with 0.05% sodium azide, approx. pH 7.2.

Molecular Weight:

~ 56 kDa

Swiss-Prot:

P06239

Purification&Purity:

The antibody was affinity-purified from rabbit antiserum by affinity-chromatography using epitope-specific immunogen and the purity is > 95% (by SDS-PAGE).

Applications:

WB: 1:500~1:1000

IHC: 1:50~1:200

IF: 1:50~1:200

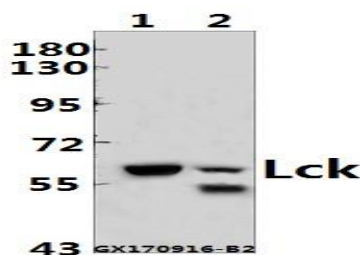
Storage&Stability:

Store at 4 °C short term. Aliquot and store at -20 °C long term. Avoid freeze-thaw cycles.

Specificity:

Lck (L186) polyclonal antibody detects endogenous levels of Lck protein.

DATA:



Western blot (WB) analysis of Lck (L186) pAb at 1:500 dilution

Lane1: The Spleen tissue lysate of Mouse(40ug)

Lane2: The Spleen tissue lysate of Rat(40ug)

Note:

For research use only, not for use in diagnostic procedure.

Bioworld Technology, Inc.

Add: 1660 South Highway 100, Suite 500 St. Louis Park, MN 55416, USA.

Email: info@bioworld.com

Tel: 6123263284

Fax: 6122933841

Bioworld technology, co. Ltd.

Add: No 9, weidi road Qixia District Nanjing, 210046, P. R. China.

Email: info@biogot.com

Tel: 0086-025-68037686

Fax: 0086-025-68035151