

Catalase (R381) polyclonal antibody

Catalog: BS1616

Host: Rabbit

Reactivity: Human, Mouse, Rat

BackGround:

Catalase is a peroxisome specific marker protein belonging to the catalase family. Defects in the gene encoding for the catalase protein, CAT, can cause acatalasia, a disease characterized by the absence of catalase activity in red cells and associated with ulcerating oral lesions. Catalase is also an important regulator of oxidative stress and inflammation, and may contribute to the development of rheumatoid arthritis. Catalase, which can form a homotetramer, is found in nearly all aerobically respiring organisms and functions in protecting cells from the toxic effects of hydrogen peroxide.

Product:

Rabbit IgG, 1mg/ml in PBS with 0.02% sodium azide, 50% glycerol, pH7.2

Molecular Weight:

~ 60 kDa

Swiss-Prot:

P04040

Purification&Purity:

The antibody was affinity-purified from rabbit antiserum by affinity-chromatography using epitope-specific immunogen and the purity is > 95% (by SDS-PAGE).

Applications:

WB: 1:500~1:1000

IHC: 1:50~1:200

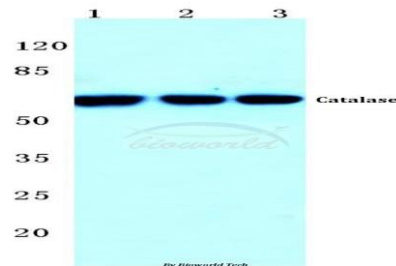
Storage&Stability:

Store at 4 °C short term. Aliquot and store at -20 °C long term. Avoid freeze-thaw cycles.

Specificity:

Catalase (R381) polyclonal antibody detects endogenous levels of Catalase protein.

DATA:

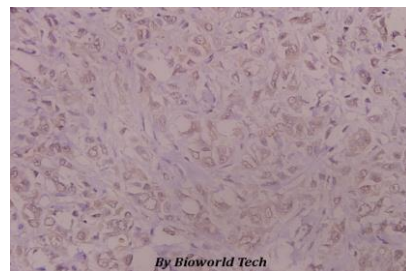


Western blot (WB) analysis of Catalase (R381) polyclonal antibody at 1:500 dilution

Lane1:MCF-7 cell lysate

Lane2:Mouse liver tissue lysate

Lane3:Rat liver tissue lysate



Immunohistochemistry (IHC) analyzes of Catalase (R381) pAb in paraffin-embedded human colorectal carcinoma tissue at 1:50.

Note:

For research use only, not for use in diagnostic procedure.

Bioworld Technology, Inc.

Add: 1660 South Highway 100, Suite 500 St. Louis Park, MN 55416, USA.

Email: info@bioworld.com

Tel: 6123263284

Fax: 6122933841

Bioworld technology, co. Ltd.

Add: No 9, weidi road Qixia District Nanjing, 210046, P. R. China.

Email: info@biogot.com

Tel: 0086-025-68037686

Fax: 0086-025-68035151