

## IL-2R $\beta$ (T360) polyclonal antibody

Catalog: BS1668

Host: Rabbit

Reactivity: Human, Mouse, Rat

### Background:

The Interleukin 2 Receptor alpha and beta chains, together with the common gamma chain, constitute the high affinity IL2 receptor present on activated T and B cells, thymocyte subset, pre B cells and T regulatory cells. Homodimeric alpha chains result in low affinity receptor, while homodimeric beta chains produce a medium affinity receptor. Normally an integral membrane protein, soluble IL2 Receptor alpha has been isolated and determined to result from extracellular proteolysis. Alternately spliced IL2 Receptor alpha mRNAs have been isolated, but the significance of each is presently unknown.

### Product:

Rabbit IgG, 1mg/ml in PBS with 0.02% sodium azide, 50% glycerol, pH7.2

### Molecular Weight:

~60 kDa

### Swiss-Prot:

P14784

### Purification&Purity:

The antibody was affinity-purified from rabbit antiserum by affinity-chromatography using epitope-specific immunogen and the purity is > 95% (by SDS-PAGE).

### Applications:

WB: 1:500~1:1000

IHC: 1:50~1:200

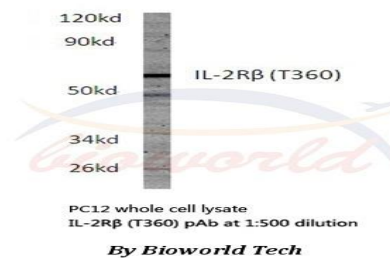
### Storage&Stability:

Store at 4 °C short term. Aliquot and store at -20 °C long term. Avoid freeze-thaw cycles.

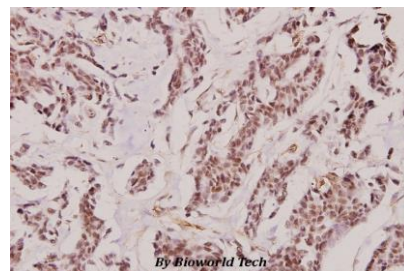
### Specificity:

IL-2R $\beta$  (T360) polyclonal antibody detects endogenous levels of IL-2R $\beta$  protein.

### DATA:



Western blot (WB) analysis of IL-2R $\beta$  (T360) polyclonal antibody in extracts from PC12 cells.



Immunohistochemistry (IHC) analyzes of IL-2R $\beta$  (T360) pAb in paraffin-embedded human breast carcinoma tissue at 1:100.

### Note:

For research use only, not for use in diagnostic procedure.

### Bioworld Technology, Inc.

Add: 1660 South Highway 100, Suite 500 St. Louis Park, MN 55416, USA.

Email: [info@bioworld.com](mailto:info@bioworld.com)

Tel: 6123263284

Fax: 6122933841

### Bioworld technology, co. Ltd.

Add: No 9, weidi road Qixia District Nanjing, 210046, P. R. China.

Email: [info@biogot.com](mailto:info@biogot.com)

Tel: 0086-025-68037686

Fax: 0086-025-68035151