

## Wnt-1 (G331) polyclonal antibody

Catalog: BS1777

Host: Rabbit

Reactivity: Human, Mouse, Rat

### BackGround:

Products of the highly conserved Wnt gene family play key roles in regulating cellular growth and differentiation. The prototype member of the Wnt gene family, Wnt-1, is a cysteine-rich secreted glycoprotein that associates with cell membranes and likely functions as a key regulator of cellular adhesion.  $\beta$ -catenin, a cadherin-binding cellular adhesion protein which also binds the tumor suppressor gene APC, has been identified as a downstream target of a signal transduction pathway mediated by Wnt-1. Wnt-1 is essential for normal development of the embryonic nervous system and its expression is normally limited to the embryonic neural tube and adult spermatids. When improperly expressed in mammary tissue, Wnt-1 contributes to hyperplasia and tumorigenic progression. Wnt family members have been shown to interact with Sonic hedgehog (Shh) in vivo to induce myogenesis in somitic tissue.

### Product:

Rabbit IgG, 1mg/ml in PBS with 0.02% sodium azide, 50% glycerol, pH7.2

### Molecular Weight:

~ 41 kDa

### Swiss-Prot:

P04628

### Purification&Purity:

The antibody was affinity-purified from rabbit antiserum by affinity-chromatography using epitope-specific immunogen and the purity is > 95% (by SDS-PAGE).

### Applications:

WB: 1:500~1:1000

IHC: 1:50~1:200

IF: 1:50~1:200

### Storage&Stability:

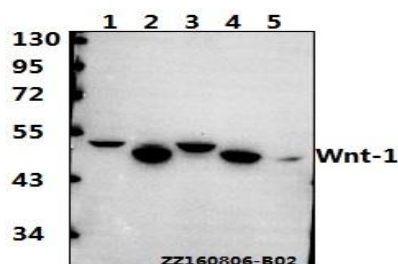
Store at 4 °C short term. Aliquot and store at -20 °C long

term. Avoid freeze-thaw cycles.

### Specificity:

Wnt-1 (G331) polyclonal antibody detects endogenous levels of Wnt-1 protein.

### DATA:



Western blot (WB) analysis of Wnt-1 (G331) polyclonal antibody at 1:500 dilution

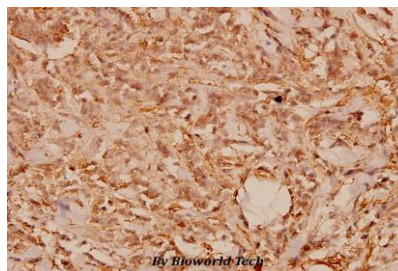
Lane1:HEK293T whole cell lysate(40ug)

Lane2:Hela whole cell lysate(40ug)

Lane3:DLD whole cell lysate(40ug)

Lane4:The Testis tissue lysate of Mouse(40ug)

Lane5:The Testis tissue lysate of Rat(40ug)



Immunohistochemistry (IHC) analyzes of Wnt-1 (G331) pAb in paraffin-embedded human breast carcinoma tissue at 1:100.

### Note:

For research use only, not for use in diagnostic procedure.

### Bioworld Technology, Inc.

Add: 1660 South Highway 100, Suite 500 St. Louis Park, MN 55416, USA.

Email: [info@bioworld.com](mailto:info@bioworld.com)

Tel: 6123263284

Fax: 6122933841

### Bioworld technology, co. Ltd.

Add: No 9, weidi road Qixia District Nanjing, 210046, P. R. China.

Email: [info@biogot.com](mailto:info@biogot.com)

Tel: 0086-025-68037686

Fax: 0086-025-68035151