

## Histone H1.0 (R94) polyclonal antibody

Catalog: BS1916

Host: Rabbit

Reactivity: Human, Mouse, Rat

### Background:

Histone H1.0 (H1 histone family, member 0) is a lysine rich member of the H1 family of linker histones. The H1 family of proteins interacts with linker DNA between nucleosomes and mediates compaction into higher order chromatin. Histone H1.0 is a unique variant considered a replacement linker histone which is expressed and incorporated into chromatin in the absence of DNA replication. In contrast, the majority of somatic H1 histones are replication dependent variants found in proliferating cells. Histone H1.0 is expressed in cells that are in the terminal stages of differentiation or that have low rates of cell division. Unlike other differentiation-specific linker histones which demonstrate tissue and species-specific expression, Histone H1.0 is widely expressed in many tissues in most vertebrates.

### Product:

1 mg/ml in Phosphate buffered saline (PBS) with 0.05% sodium azide, approx. pH 7.2.

### Molecular Weight:

~ 20 kDa

### Swiss-Prot:

P07305

### Purification&Purity:

The antibody was affinity-purified from rabbit antiserum by affinity-chromatography using epitope-specific immunogen and the purity is > 95% (by SDS-PAGE).

### Applications:

WB: 1:500~1:1000

IHC: 1:50~1:200

### Storage&Stability:

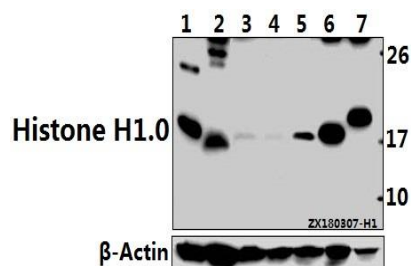
Store at 4 °C short term. Aliquot and store at -20 °C long term. Avoid freeze-thaw cycles.

### Specificity:

Histone H1.0 (R94) polyclonal antibody detects endoge-

nous levels of Histone H1.0 protein.

### DATA:



Western blot (WB) analysis of Histone H1.0 (R94) pAb at 1:500 dilution

Lane1: The Brain tissue lysate of Mouse (40ug)

Lane2: The Spleen tissue lysate of Rat (40ug)

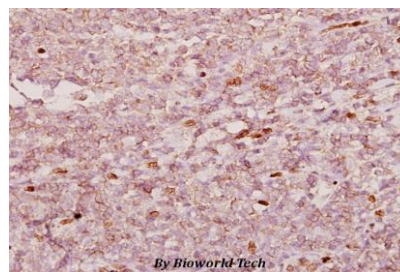
Lane3: EC9706 whole cell lysate (40ug)

Lane4: L02 whole cell lysate (40ug)

Lane5: HEK293T whole cell lysate (40ug)

Lane6: The Heart tissue lysate of Mouse (10ug)

Lane7: The Heart tissue lysate of Rat (10ug)



Immunohistochemistry (IHC) analyzes of Histone H1.0 (R94) pAb in paraffin-embedded human tonsil carcinoma tissue at 1:50.

### Note:

For research use only, not for use in diagnostic procedure.

### Bioworld Technology, Inc.

Add: 1660 South Highway 100, Suite 500 St. Louis Park, MN 55416, USA.

Email: [info@bioworld.com](mailto:info@bioworld.com)

Tel: 6123263284

Fax: 6122933841

### Bioworld technology, co. Ltd.

Add: No 9, weidi road Qixia District Nanjing, 210046, P. R. China.

Email: [info@biogot.com](mailto:info@biogot.com)

Tel: 0086-025-68037686

Fax: 0086-025-68035151