

ATF-7 (F74) polyclonal antibody

Catalog: BS1941

Host: Rabbit

Reactivity: Human, Mouse, Rat

Background:

Eukaryotic gene transcription is regulated by sequence-specific transcription factors, which bind modular cis acting promoter and enhancer elements. The cAMP response element (CRE) consists of the palindromic octanucleotide TGACGTCA. There are several CRE binding proteins within the ATF/CREB family, including CREB-1, CREB-2 (also designated ATF-4), ATF-1, ATF-2 and ATF-3. A novel basic leucine zipper (bZIP) protein, designated ATF-7, is closely related to members of the ATF/CREB family of bZIP proteins, with highest homology to ATF-4. ATF-7 physically interacts with the PRL-1 protein-tyrosine phosphatase (PTPase), which is a predominately nuclear, farnesylated PTPase. ATF-7 homodimers bind specifically to CRE elements. ATF-7 is expressed in a number of different tissues and is expressed in association with differentiation. ATF-7 and PRL-1 interact with each other through the bZIP region of ATF-7 and the phosphatase domain of PRL-1. In addition, PRL-1 is able to dephosphorylate ATF-7 in vitro.

Product:

1 mg/ml in Phosphate buffered saline (PBS) with 0.05% sodium azide, approx. pH 7.2.

Molecular Weight:

~ 35, 53 kDa

Swiss-Prot:

P17544

Purification&Purity:

The antibody was affinity-purified from rabbit antiserum by affinity-chromatography using epitope-specific immunogen and the purity is > 95% (by SDS-PAGE).

Applications:

WB: 1:500~1:1000

IHC: 1:50~1:200

IF: 1:50~1:200

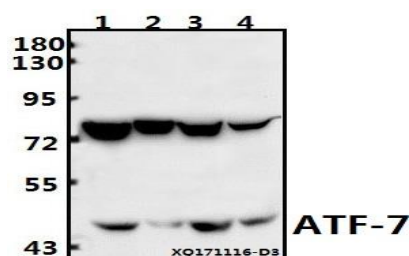
Storage&Stability:

Store at 4 °C short term. Aliquot and store at -20 °C long term. Avoid freeze-thaw cycles.

Specificity:

ATF-7 (F74) polyclonal antibody detects endogenous levels of ATF-7 protein.

DATA:



Western blot (WB) analysis of ATF-7 (F74) pAb at 1:1000 dilution

Lane1:A549 whole cell lysate(40ug)

Lane2:HCC827 whole cell lysate(40ug)

Lane3:PMVEC whole cell lysate(40ug)

Lane4:3T3-L1 whole cell lysate(40ug)



Immunohistochemistry (IHC) analyzes of ATF-7 (F74) pAb in paraffin-embedded human brain tissue.

Note:

For research use only, not for use in diagnostic procedure.

Bioworld Technology, Inc.

Add: 1660 South Highway 100, Suite 500 St. Louis Park, MN 55416, USA.

Email: info@bioworld.com

Tel: 6123263284

Fax: 6122933841

Bioworld technology, co. Ltd.

Add: No 9, weidi road Qixia District Nanjing, 210046, P. R. China.

Email: info@biogot.com

Tel: 0086-025-68037686

Fax: 0086-025-68035151