

PFKL (E724) polyclonal antibody

Catalog: BS1943

Host: Rabbit

Reactivity: Human, Mouse, Rat

BackGround:

Phosphofructokinase (PFK) catalyzes the phosphorylation of fructose-6-phosphate in glycolysis. There are three isozymes: muscle-type, liver-type, and platelet-type. The liver-type PFK (PFKL) is the predominant subunit of PFK found in the liver. Research studies have shown that because of its location on chromosome 21, this enzyme is overexpressed in Down Syndrome/trisomy 21. PFKL also may have a role in the physiological response to a low fat diet.

Product:

Rabbit IgG, 1mg/ml in PBS with 0.02% sodium azide, 50% glycerol, pH7.2

Molecular Weight:

~ 85 kDa

Swiss-Prot:

P17858

Purification&Purity:

The antibody was affinity-purified from rabbit antiserum by affinity-chromatography using epitope-specific immunogen and the purity is > 95% (by SDS-PAGE).

Applications:

IHC: 1:50~1:200

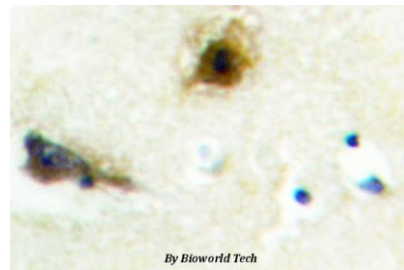
Storage&Stability:

Store at 4 °C short term. Aliquot and store at -20 °C long term. Avoid freeze-thaw cycles.

Specificity:

PFKL (E724) polyclonal antibody detects endogenous levels of PFKL protein.

DATA:



Immunohistochemistry (IHC) analyzes of PFKL (E724) pAb in paraffin-embedded human brain tissue.

Note:

For research use only, not for use in diagnostic procedure.

Bioworld Technology, Inc.

Add: 1660 South Highway 100, Suite 500 St. Louis Park, MN 55416, USA.

Email: info@bioworld.com

Tel: 6123263284

Fax: 6122933841

Bioworld technology, co. Ltd.

Add: No 9, weidi road Qixia District Nanjing, 210046, P. R. China.

Email: info@biogot.com

Tel: 0086-025-68037686

Fax: 0086-025-68035151