

Hel-N1 (N86) polyclonal antibody

Catalog: BS1966

Host: Rabbit

Reactivity: Human, Mouse, Rat

BackGround:

The Elav-like genes encode for a family of RNA-binding proteins. Elav, a Drosophila protein and the first described member, is expressed immediately after neuroblastic differentiation into neurons and is necessary for neuronal differentiation and maintenance. Several mammalian Elav-like proteins, designated HuC, HuD and Hel-N1, are also expressed in postmitotic neurons. An additional mammalian homolog, HuR, which is also designated HuA, is ubiquitously expressed and is also over-expressed in a wide variety of tumors. Characteristically, these homologs all contain three RNA recognition motifs (RRM), and they specifically bind to AU-rich elements (ARE) in the 3'-untranslated region of mRNAs transcripts. ARE sites target mRNA for rapid degradation and thereby regulate the expression levels of genes involved in cell growth and differentiation.

Product:

Rabbit IgG, 1mg/ml in PBS with 0.02% sodium azide, 50% glycerol, pH7.2

Molecular Weight:

~ 40 kDa

Swiss-Prot:

Q12926

Purification&Purity:

The antibody was affinity-purified from rabbit antiserum by affinity-chromatography using epitope-specific immunogen and the purity is > 95% (by SDS-PAGE).

Applications:

IHC: 1:50~1:200

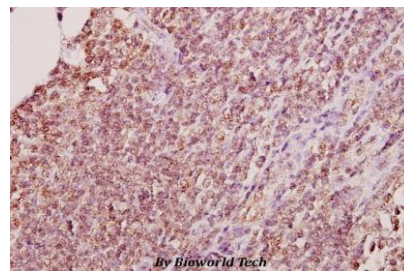
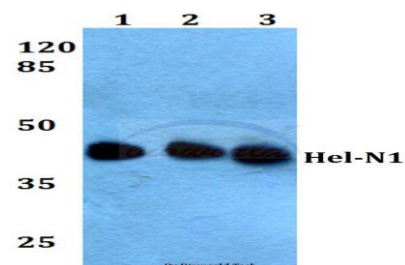
Storage&Stability:

Store at 4 °C short term. Aliquot and store at -20 °C long term. Avoid freeze-thaw cycles.

Specificity:

Hel-N1 (N86) polyclonal antibody detects endogenous levels of HuB protein, and also detects HuD protein

DATA:



Immunohistochemistry (IHC) analyzes of Hel-N1 (N86) pAb in paraffin-embedded human tonsil carcinoma tissue at 1:50.

Note:

For research use only, not for use in diagnostic procedure.

Bioworld Technology, Inc.

Add: 1660 South Highway 100, Suite 500 St. Louis Park, MN 55416, USA.

Email: info@bioworld.com

Tel: 6123263284

Fax: 6122933841

Bioworld technology, co. Ltd.

Add: No 9, weidi road Qixia District Nanjing, 210046, P. R. China.

Email: info@biogot.com

Tel: 0086-025-68037686

Fax: 0086-025-68035151