

## UMP-CMP Kinase (E36) polyclonal antibody

Catalog: BS1975

Host: Rabbit

Reactivity: Human, Mouse, Rat

### BackGround:

Nucleoside monophosphate kinases are required for pharmacological activation of therapeutic nucleosides and nucleotide analogs. CMPK (Cytidine monophosphate kinase), also known as UMP-CMP kinase and Deoxycytidylate kinase, is a 196 amino acid protein that catalyzes the phosphoryl transfer from ATP to UMP, CMP and dCMP. This enzymatic reaction leads to the formation of ADP and the corresponding nucleoside diphosphate, which are required for cellular nucleic acid synthesis. Primarily localized to the cytoplasm, CMPK also plays an important role in the activation of pyrimidine analogs, which is clinically useful anti-cancer and anti-viral drugs. CMP is the best substrate for CMPK, followed by UMP and dCMP.

### Product:

Rabbit IgG, 1mg/ml in PBS with 0.02% sodium azide, 50% glycerol, pH7.2

### Molecular Weight:

~ 26 kDa

### Swiss-Prot:

P30085

### Purification&Purity:

The antibody was affinity-purified from rabbit antiserum by affinity-chromatography using epitope-specific immunogen and the purity is > 95% (by SDS-PAGE).

### Applications:

WB: 1:500~1:1000

IHC: 1:50~1:200

IP: 1:10~1:100

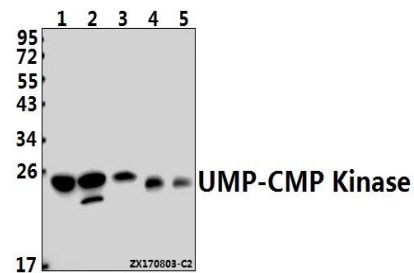
### Storage&Stability:

Store at 4 °C short term. Aliquot and store at -20 °C long term. Avoid freeze-thaw cycles.

### Specificity:

UMP-CMP Kinase (E36) polyclonal antibody detects endogenous levels of UMP-CMP Kinase protein.

### DATA:



Western blot (WB) analysis of UMP-CMP Kinase (E36) pAb at 1:1000 dilution

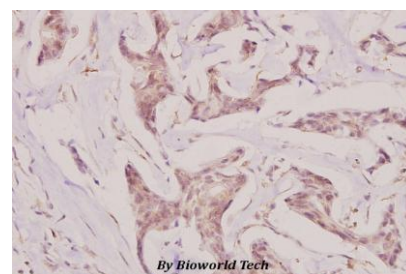
Lane1:Hela whole cell lysate(40ug)

Lane2:H9C2 whole cell lysate(40ug)

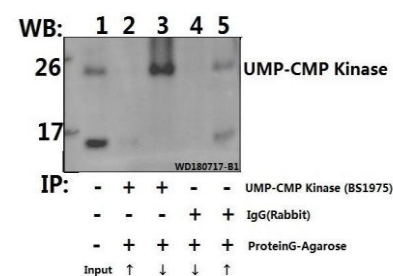
Lane3:MEF whole cell lysate(40ug)

Lane4:A549 whole cell lysate(40ug)

Lane5:HEK293T whole cell lysate(40ug)



Immunohistochemistry (IHC) analyzes of UMP-CMP Kinase (E36) pAb in paraffin-embedded human breast carcinoma tissue at 1:100.



Immunoprecipitation of HEK293T cell lysate using UMP-CMP Kinase (E36) pAb (Sephacrose Bead Conjugate) #BD0048(lane 2 and lane 3) and Nonspecific IgG Control (Sephacrose Bead Conjugate) #BD0048 (lane 4 and lane 5) .Lane 1 is 30% input. The western blot was probed using UMP-CMP Kinase (E36). “ ↑ ”

### Bioworld Technology, Inc.

Add: 1660 South Highway 100, Suite 500 St. Louis Park, MN 55416, USA.

Email: [info@bioworld.com](mailto:info@bioworld.com)

Tel: 6123263284

Fax: 6122933841

### Bioworld technology, co. Ltd.

Add: No 9, weidi road Qixia District Nanjing, 210046, P. R. China.

Email: [info@biogot.com](mailto:info@biogot.com)

Tel: 0086-025-68037686

Fax: 0086-025-68035151



## PRODUCT DATA SHEET

Bioworld Technology, Inc.

(supernatant) ; “ ↓ (deposition)

For research use only, not for use in diagnostic procedure.

Note:

---

### Bioworld Technology, Inc.

Add: 1660 South Highway 100, Suite 500 St. Louis Park,  
MN 55416, USA.

Email: [info@bioworld.com](mailto:info@bioworld.com)

Tel: 6123263284

Fax: 6122933841

### Bioworld technology, co. Ltd.

Add: No 9, weidi road Qixia District Nanjing, 210046,  
P. R. China.

Email: [info@biogot.com](mailto:info@biogot.com)

Tel: 0086-025-68037686

Fax: 0086-025-68035151