

CBP20 (R21) polyclonal antibody

Catalog: BS2012

Host: Rabbit

Reactivity: Human, Mouse, Rat

BackGround:

In eukaryotes, the majority of mRNAs have an m(7)G cap, which is added cotranscriptionally and plays a critical role in many aspects of mRNA metabolism. The effect of the cap on translation is mediated by the initiation factor eIF-4F, whereas the effect on pre-mRNA splicing involves a nuclear complex (CBC). CBC consists of two cap binding proteins, CBP20 and CBP80, which mediate the stimulatory functions of the cap in pre-mRNA splicing, 3' end formation and U snRNA export. The genes CBC1 and CBC2 encode CBP80 and CBP20, respectively. CBP80 comprises three domains, each containing a MIF4G domain. CBP20 has an RNAP fold and associates with the second and third domains of CBP80.

Product:

Rabbit IgG, 1mg/ml in PBS with 0.02% sodium azide, 50% glycerol, pH7.2

Molecular Weight:

~ 18 kDa

Swiss-Prot:

P52298

Purification&Purity:

The antibody was affinity-purified from rabbit antiserum by affinity-chromatography using epitope-specific immunogen and the purity is > 95% (by SDS-PAGE).

Applications:

WB: 1:500~1:1000

IHC/IF: 1:50~1:200

IP: 1:10~1:100

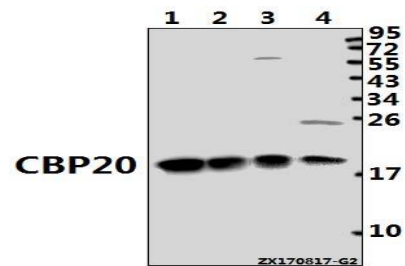
Storage&Stability:

Store at 4 °C short term. Aliquot and store at -20 °C long term. Avoid freeze-thaw cycles.

Specificity:

CBP20 (R21) polyclonal antibody detects endogenous levels of CBP20 protein.

DATA:



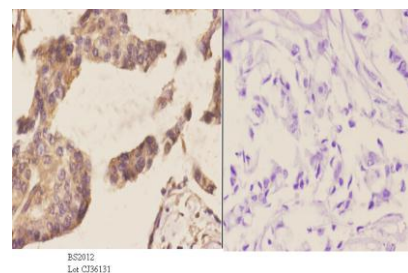
Western blot (WB) analysis of CBP20 (R21) pAb at 1:1000 dilution

Lane1:MCF-7 whole cell lysate(40ug)

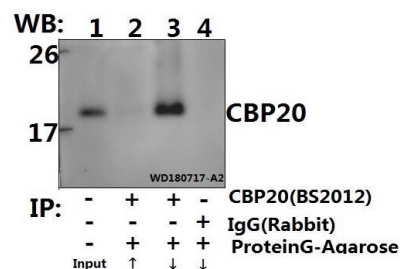
Lane2:L02 whole cell lysate(40ug)

Lane3:CT26 whole cell lysate(40ug)

Lane4:H9C2 whole cell lysate(40ug)



Immunohistochemistry (IHC) analyzes of CBP20 (R21) pAb in paraffin-embedded human breast carcinoma tissue at 1:50. showing cytoplasmic and nucleus staining. Negative control (the right) Using PBS instead of primary antibody, secondary antibody is Goat Anti-Rabbit IgG-biotin followed by avidin-peroxidase.



Immunoprecipitation of HEK293T cell lysate using CBP20 (R21) pAb (Sepharose Bead Conjugate) #BD0048(lane 2 and lane 3) and Nonspecific IgG Control (Sepharose Bead Conjugate) #BD0048 (lane 4) .Lane 1 is 30% input. The western blot was probed using CBP20 (R21) . “ ↑ ”

Bioworld Technology, Inc.

Add: 1660 South Highway 100, Suite 500 St. Louis Park, MN 55416, USA.

Email: info@bioworld.com

Tel: 6123263284

Fax: 6122933841

Bioworld technology, co. Ltd.

Add: No 9, weidi road Qixia District Nanjing, 210046, P. R. China.

Email: info@biogot.com

Tel: 0086-025-68037686

Fax: 0086-025-68035151



PRODUCT DATA SHEET

Bioworld Technology, Inc.

(supernatant) ; “ ↓ (deposition)

For research use only, not for use in diagnostic procedure.

Note:

Bioworld Technology, Inc.

Add: 1660 South Highway 100, Suite 500 St. Louis Park,
MN 55416, USA.

Email: info@bioworld.com

Tel: 6123263284

Fax: 6122933841

Bioworld technology, co. Ltd.

Add: No 9, weidi road Qixia District Nanjing, 210046,
P. R. China.

Email: info@biogot.com

Tel: 0086-025-68037686

Fax: 0086-025-68035151