

MEF-2B (P98) polyclonal antibody

Catalog: BS2028

Host: Rabbit

Reactivity: Human, Mouse, Rat

Background:

The myocyte enhancer factor-2 (MEF-2) family of transcription factors associated with co-repressors or co-activators to regulate development and function of T cells, neuronal cells and muscle cells. Four family members arise from alternatively spliced transcripts, termed MEF-2A, -2B, -2C and -2D. These members bind as homo- and heterodimers to the MEF-2 site in the promoter region of affected genes. Differential regulation in the expression of the four transcripts implies functional distinction for each during embryogenesis and development. The process of differentiation from mesodermal precursor cells to myoblasts has led to the discovery of a variety of tissue-specific factors that regulate muscle gene expression.

Product:

1 mg/ml in Phosphate buffered saline (PBS) with 0.05% sodium azide, approx. pH 7.2.

Molecular Weight:

~ 39 kDa

Swiss-Prot:

Q02080

Purification&Purity:

The antibody was affinity-purified from rabbit antiserum by affinity-chromatography using epitope-specific immunogen and the purity is > 95% (by SDS-PAGE).

Applications:

WB: 1:500~1:1000

IHC: 1:50~1:200

Storage&Stability:

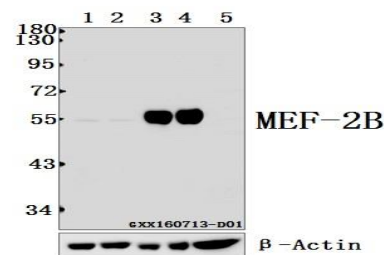
Store at 4 °C short term. Aliquot and store at -20 °C long term. Avoid freeze-thaw cycles.

Specificity:

MEF-2B (P98) polyclonal antibody detects endogenous

levels of MEF-2B protein.

DATA:



Western blot (WB) analysis of MEF-2B (P98) polyclonal antibody at 1:500 dilution

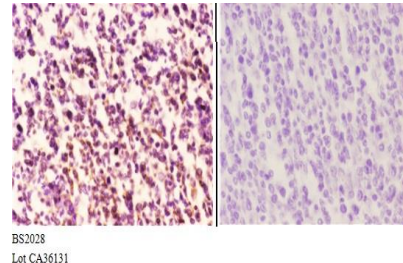
Lane1:The Muscle tissue lysate of Rat(10ug)

Lane2:The Muscle tissue lysate of Mouse(10ug)

Lane3:The Brain tissue lysate of Rat(10ug)

Lane4:The Brain tissue lysate of Mouse(10ug)

Lane5:U-87MG whole cell lysate(40ug)



Immunohistochemistry (IHC) analyzes of MEF-2B (P98) pAb in paraffin-embedded tonsil carcinoma tissue at 1:50, showing Nucleus staining. Negative control (the right) Using PBS instead of primary antibody, secondary antibody is Goat Anti-Rabbit IgG-biotin followed by avidin-peroxidase.

Note:

For research use only, not for use in diagnostic procedure.

Bioworld Technology, Inc.

Add: 1660 South Highway 100, Suite 500 St. Louis Park, MN 55416, USA.

Email: info@bioworld.com

Tel: 6123263284

Fax: 6122933841

Bioworld technology, co. Ltd.

Add: No 9, weidi road Qixia District Nanjing, 210046, P. R. China.

Email: info@biogot.com

Tel: 0086-025-68037686

Fax: 0086-025-68035151