

## Sp2 (D512) polyclonal antibody

Catalog: BS2029

Host: Rabbit

Reactivity: Human, Mouse, Rat

### Background:

The Sp transcription factor family includes Sp1, Sp2, Sp3 (SPR-2) and Sp4 (SPR-1). Sp transcription factors share similar structures but do not share similar functions. All four proteins contain a highly conserved DNA-binding domain composed of three zinc fingers at the C-terminus. Sp family members bind the consensus sequence GGGGCGGGGC and other closely related sequences which are known as GC boxes. Sp1, Sp3 and Sp4 share a high affinity for GC boxes while Sp2 does not. Sp2 only weakly binds to GT boxes. Sp1, Sp2 and Sp3 are ubiquitously expressed, while Sp4 is abundantly expressed in brain with limited expression in other tissues. Sp1 and Sp3, but not Sp2 or Sp4, interact with E2, a regulatory element for the b4 subunit of neuronal nicotinic acetylcholine receptors. Sp3 is the only Sp member to inhibit Sp1 and Sp4 mediated transcription. The gene3 encoding human Sp2 maps to chromosome 17p32.3.

### Product:

Rabbit IgG, 1mg/ml in PBS with 0.02% sodium azide, 50% glycerol, pH7.2

### Molecular Weight:

~ 64 kDa

### Swiss-Prot:

Q02086

### Purification&Purity:

The antibody was affinity-purified from rabbit antiserum by affinity-chromatography using epitope-specific immunogen and the purity is > 95% (by SDS-PAGE).

### Applications:

IHC: 1:50~1:200

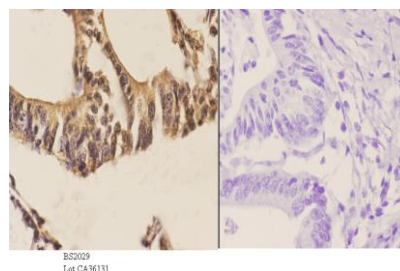
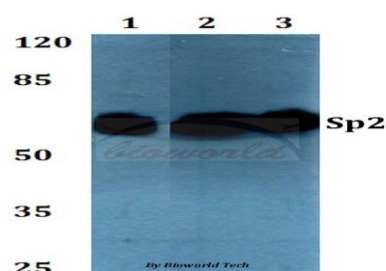
### Storage&Stability:

Store at 4 °C short term. Aliquot and store at -20 °C long term. Avoid freeze-thaw cycles.

### Specificity:

Sp2 (D512) polyclonal antibody detects endogenous levels of Sp2 protein.

### DATA:



Immunohistochemistry (IHC) analyzes of Sp2 (D512) pAb in paraffin-embedded human colon carcinoma tissue at 1:50, showing cytoplasmic and nucleus staining. Negative control (the right) Using PBS instead of primary antibody, secondary antibody is Goat Anti-Rabbit IgG-biotin followed by avidin-peroxidase.

### Note:

For research use only, not for use in diagnostic procedure.

### Bioworld Technology, Inc.

Add: 1660 South Highway 100, Suite 500 St. Louis Park, MN 55416, USA.

Email: [info@bioworld.com](mailto:info@bioworld.com)

Tel: 6123263284

Fax: 6122933841

### Bioworld technology, co. Ltd.

Add: No 9, weidi road Qixia District Nanjing, 210046, P. R. China.

Email: [info@biogot.com](mailto:info@biogot.com)

Tel: 0086-025-68037686

Fax: 0086-025-68035151