

TLE4 (H190) polyclonal antibody

Catalog: BS2035

Host: Rabbit

Reactivity: Human, Mouse, Rat

Background:

TLEs associate with chromatin in live cells and specifically with Histone H3, but not with other core histones. Expression of the TLE genes, TLE1, TLE2, TLE3 and TLE4, correlate with immature epithelial cells that are progressing toward a terminally differentiated state, suggesting a role during epithelial differentiation. TLE1, TLE2 and TLE3 have elevated expression in cervical squamous metaplasias and carcinomas, while TLE4 is most highly expressed in the brain, particularly in the caudate nucleus. TLE1 and TLE4 contain SP and WD40 domains, through which TLE1 binds AML1 to inhibit AML1-induced transactivation of the CSF1 receptor. In early stages of cell differentiation, TLE1 is up-regulated, and TLE2 and TLE4 are down-regulated.

Product:

Rabbit IgG, 1mg/ml in PBS with 0.02% sodium azide, 50% glycerol, pH7.2

Molecular Weight:

~ 83 kDa

Swiss-Prot:

Q04727

Purification&Purity:

The antibody was affinity-purified from rabbit antiserum by affinity-chromatography using epitope-specific immunogen and the purity is > 95% (by SDS-PAGE).

Applications:

WB: 1:500~1:1000

IHC: 1:50~1:200

IP: 1:10~1:100

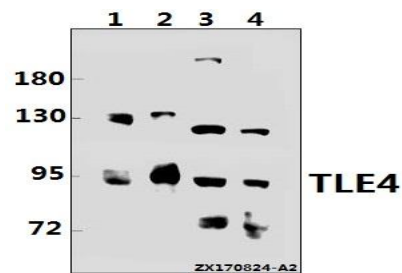
Storage&Stability:

Store at 4 °C short term. Aliquot and store at -20 °C long term. Avoid freeze-thaw cycles.

Specificity:

TLE4 (H190) polyclonal antibody detects endogenous levels of TLE4 protein.

DATA:



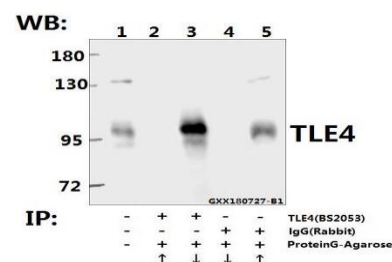
Western blot (WB) analysis of TLE4 (H190) pAb at 1:500 dilution

Lane1:U-87MG whole cell lysate(40ug)

Lane2:HEK293T whole cell lysate(10ug)

Lane3:The Testis tissue lysate of Mouse(40ug)

Lane4:The Testis tissue lysate of Rat(40ug)



Immunoprecipitation of HEK293T cell lysate using TLE4 (H190) pAb (Sepharose Bead Conjugate) #BD0048(lane 2 and lane 3) and Nonspecific IgG Control (Sepharose Bead Conjugate) #BD0048 (lane 4 and lane 5) .Lane 1 is 30% input. The western blot was probed using TLE4 (H190). “ ↑ ” (supernatant) ; “ ↓ ” (deposition)

Note:

For research use only, not for use in diagnostic procedure.

Bioworld Technology, Inc.

Add: 1660 South Highway 100, Suite 500 St. Louis Park, MN 55416, USA.

Email: info@bioworld.com

Tel: 6123263284

Fax: 6122933841

Bioworld technology, co. Ltd.

Add: No 9, weidi road Qixia District Nanjing, 210046, P. R. China.

Email: info@biogot.com

Tel: 0086-025-68037686

Fax: 0086-025-68035151