

GK2 (Y306) polyclonal antibody

Catalog: BS2060

Host: Rabbit

Reactivity: Human, Mouse, Rat

BackGround:

GK2 (glycerol kinase 2), also known as GKP2 or GKTA, is a 553 amino acid protein that belongs to the FGGY kinase family and is involved in the pathway of glycerol degradation. Localized to the outer membrane of the mitochondrion and expressed at high levels in testis, GK2 functions to catalyze the ATP-dependent conversion of glycerol to glycerol 3-phosphate. Via its catalytic activity, GK2 plays an essential role in the regulation of glycerol uptake and metabolism.

Product:

Rabbit IgG, 1mg/ml in PBS with 0.02% sodium azide, 50% glycerol, pH7.2

Molecular Weight:

~ 61 kDa

Swiss-Prot:

Q14410

Purification&Purity:

The antibody was affinity-purified from rabbit antiserum by affinity-chromatography using epitope-specific immunogen and the purity is > 95% (by SDS-PAGE).

Applications:

IHC: 1:50~1:200

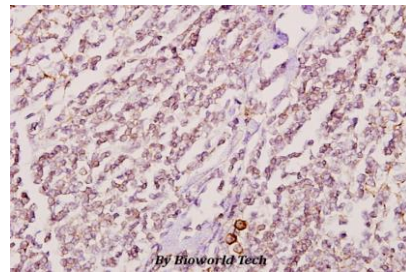
Storage&Stability:

Store at 4 °C short term. Aliquot and store at -20 °C long term. Avoid freeze-thaw cycles.

Specificity:

GK2 (Y306) polyclonal antibody detects endogenous levels of GK2 protein.

DATA:



Immunohistochemistry (IHC) analyzes of GK2 (Y306) pAb in paraffin-embedded human tonsil cancer tissue at 1:50.

Note:

For research use only, not for use in diagnostic procedure.

Bioworld Technology, Inc.

Add: 1660 South Highway 100, Suite 500 St. Louis Park, MN 55416, USA.

Email: info@bioworld.com

Tel: 6123263284

Fax: 6122933841

Bioworld technology, co. Ltd.

Add: No 9, weidi road Qixia District Nanjing, 210046, P. R. China.

Email: info@biogot.com

Tel: 0086-025-68037686

Fax: 0086-025-68035151