

## Emp (E207) polyclonal antibody

Catalog: BS2092

Host: Rabbit

Reactivity: Human, Mouse, Rat

### BackGround:

Emp (Erythroblast macrophage protein), also known as Macrophage erythroblast attachor or Human lung cancer oncogene 10 protein, is a 396 amino acid ubiquitously expressed adhesion protein. Expressed as 5 alternatively spliced isoforms, Emp contains one CTLH domain and one LisH domain. Emp can form a complex with F-actin, which is involved regulating actin distribution in erythroblasts and macrophages. Considered to assist with cell division and nuclear architecture, Emp is localized with condensed chromatin at prophase, nuclear spindle poles at metaphase and in the contractile ring during telophase and cytokinesis. Although the exact function of Emp is unknown, Emp is suggested to be involvement in erythroblast-macrophage cell attachment, terminal maturation and enucleation of erythroid cells, and inhibiting apoptosis of erythroblasts.

### Product:

Rabbit IgG, 1mg/ml in PBS with 0.02% sodium azide, 50% glycerol, pH7.2

### Molecular Weight:

~ 45 kDa

### Swiss-Prot:

Q7L5Y9

### Purification&Purity:

The antibody was affinity-purified from rabbit antiserum

by affinity-chromatography using epitope-specific immunogen and the purity is > 95% (by SDS-PAGE).

### Applications:

IHC: 1:50~1:200

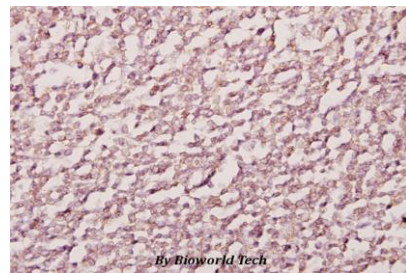
### Storage&Stability:

Store at 4 °C short term. Aliquot and store at -20 °C long term. Avoid freeze-thaw cycles.

### Specificity:

Emp (E207) polyclonal antibody detects endogenous levels of Emp protein.

### DATA:



Immunohistochemistry (IHC) analyzes of Emp (E207) pAb in paraffin-embedded human tonsil cancer tissue at 1:50.

### Note:

For research use only, not for use in diagnostic procedure.

### Bioworld Technology, Inc.

Add: 1660 South Highway 100, Suite 500 St. Louis Park, MN 55416, USA.

Email: [info@bioworld.com](mailto:info@bioworld.com)

Tel: 6123263284

Fax: 6122933841

### Bioworld technology, co. Ltd.

Add: No 9, weidi road Qixia District Nanjing, 210046, P. R. China.

Email: [info@biogot.com](mailto:info@biogot.com)

Tel: 0086-025-68037686

Fax: 0086-025-68035151