

## M-cadherin (A108) polyclonal antibody

Catalog: BS2220

Host: Rabbit

Reactivity: Human, Mouse, Rat

### Background:

Cadherins are a multigene family of Ca<sup>++</sup>-dependent cell adhesion molecules. They are transmembrane glycoproteins consisting of an extracellular domain, which mediates Ca<sup>++</sup>-dependent intercellular adhesion by homophilic interactions, a transmembrane region and a cytoplasmic domain. The extracellular domain is divided into a series of subdomains designated EC1-EC5. Homologies between different members of the cadherin family are most prominent in the cytoplasmic domain and in EC1 and EC2 and much less so in EC5 of the extracellular domain and in the transmembrane region. The binding properties and specificities of the adhesive function are located in the N-terminal part of the molecules. Four members of the cadherin family have been identified and molecularly cloned from mammalian cells. These include the neuronal (N), epithelial (E), placental (P) and muscle (M) cadherins. M-cadherin is not found in fibroblasts but is expressed at low level in myoblasts and is upregulated following induction of myotube formation, suggesting a specific function in skeletal muscle cell differentiation.

### Product:

Rabbit IgG, 1mg/ml in PBS with 0.02% sodium azide, 50% glycerol, pH7.2

### Molecular Weight:

~ 105 kDa

### Swiss-Prot:

P55291

### Purification&Purity:

The antibody was affinity-purified from rabbit antiserum by affinity-chromatography using epitope-specific immunogen and the purity is > 95% (by SDS-PAGE).

### Applications:

WB: 1:500~1:1000

IHC: 1:50~1:200

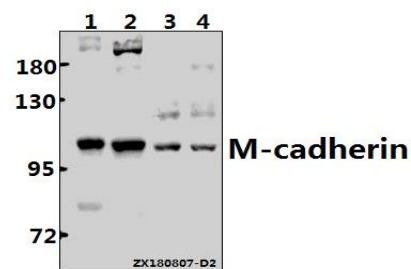
### Storage&Stability:

Store at 4 °C short term. Aliquot and store at -20 °C long term. Avoid freeze-thaw cycles.

### Specificity:

M-cadherin (A108) polyclonal antibody detects endogenous levels of M-cadherin protein..

### DATA:



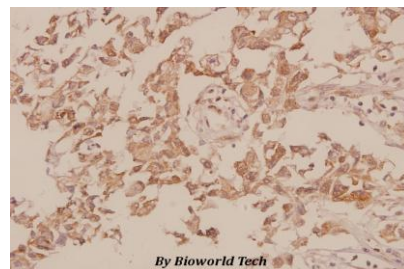
Western blot (WB) analysis of M-cadherin (A108) Antibody at 1:500 dilution

Lane1:MG63 whole cell lysate(30ug)

Lane2:U-87MG whole cell lysate(40ug)

Lane3:The Brain tissue lysate of Mouse(40ug)

Lane4:The Brain tissue lysate of Rat(40ug)



Immunohistochemistry (IHC) analyzes of M-cadherin (A108) pAb in paraffin-embedded human breast carcinoma tissue at 1:50.

### Note:

For research use only, not for use in diagnostic procedure.

### Bioworld Technology, Inc.

Add: 1660 South Highway 100, Suite 500 St. Louis Park, MN 55416, USA.

Email: [info@bioworld.com](mailto:info@bioworld.com)

Tel: 6123263284

Fax: 6122933841

### Bioworld technology, co. Ltd.

Add: No 9, weidi road Qixia District Nanjing, 210046, P. R. China.

Email: [info@biogot.com](mailto:info@biogot.com)

Tel: 0086-025-68037686

Fax: 0086-025-68035151



## PRODUCT DATA SHEET

Bioworld Biotech Co., Ltd

---

---

### **Bioworld Technology, Inc.**

**Add:** 1660 South Highway 100, Suite 500 St. Louis Park,  
MN 55416, USA.

**Email:** [info@bioworld.com](mailto:info@bioworld.com)

**Tel:** 6123263284

**Fax:** 6122933841

### **Bioworld technology, co. Ltd.**

**Add:** No 9, weidi road Qixia District Nanjing, 210046,  
P. R. China.

**Email:** [info@biogot.com](mailto:info@biogot.com)

**Tel:** 0086-025-68037686

**Fax:** 0086-025-68035151