

## Prefoldin 1 (E35) polyclonal antibody

Catalog: BS2245

Host: Rabbit

Reactivity: Human, Mouse, Rat

### BackGround:

PFDN1 is a heterohexameric chaperone protein which assists in the correct folding of other proteins. It binds specifically to cytosolic chaperonin and transfers target proteins. PFDN1 may function by selectively targeting nascent actin and tubulin chains pending their transfer to cytosolic chaperonin for final folding and/or assembly. It promotes folding in an environment in which there are many competing pathways for non native proteins.

### Product:

Rabbit IgG, 1mg/ml in PBS with 0.02% sodium azide, 50% glycerol, pH7.2

### Molecular Weight:

~ 14 kDa

### Swiss-Prot:

O60925

### Purification&Purity:

The antibody was affinity-purified from rabbit antiserum by affinity-chromatography using epitope-specific immunogen and the purity is > 95% (by SDS-PAGE).

### Applications:

WB: 1:500~1:1000

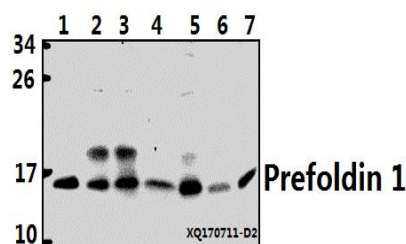
### Storage&Stability:

Store at 4 °C short term. Aliquot and store at -20 °C long term. Avoid freeze-thaw cycles.

### Specificity:

Prefoldin 1 (E35) polyclonal antibody detects endogenous levels of Prefoldin 1 protein.

### DATA:



Western blot (WB) analysis of Prefoldin 1 (E35) polyclonal antibody at 1:500 dilution

Lane1:K562 whole cell lysate(40ug)

Lane2:HepG2 whole cell lysate(40ug)

Lane3:A549 whole cell lysate(40ug)

Lane4:U-87MG whole cell lysate(40ug)

Lane5:HEK293T whole cell lysate(40ug)

Lane6:H9C2 whole cell lysate(40ug)

Lane7:CT-26 whole cell lysate(40ug)

### Note:

For research use only, not for use in diagnostic procedure.

### Bioworld Technology, Inc.

Add: 1660 South Highway 100, Suite 500 St. Louis Park, MN 55416, USA.

Email: [info@bioworld.com](mailto:info@bioworld.com)

Tel: 6123263284

Fax: 6122933841

### Bioworld technology, co. Ltd.

Add: No 9, weidi road Qixia District Nanjing, 210046, P. R. China.

Email: [info@biogot.com](mailto:info@biogot.com)

Tel: 0086-025-68037686

Fax: 0086-025-68035151