

PSK-H1 (M295) polyclonal antibody

Catalog: BS2256

Host: Rabbit

Reactivity: Human, Mouse, Rat

BackGround:

PSKH1 (protein serine kinase H1) is a 424 amino acid protein that localizes to a variety of places within the cell, including the Golgi apparatus, nuclear speckles, centrosomes and the membrane of the endoplasmic reticulum. Expressed ubiquitously, PSKH1 belongs to the Ser/Thr protein kinase family and functions as a splicing factor compartment-associated serine kinase that is thought to play a role in mRNA processing and SR (serine/arginine) protein trafficking events. PSKH1 contains one protein kinase domain and exists as a homodimer that is subject to autophosphorylation on specific serine residues.

Product:

Rabbit IgG, 1mg/ml in PBS with 0.02% sodium azide, 50% glycerol, pH7.2

Molecular Weight:

~ 48 kDa

Swiss-Prot:

P11801

Purification&Purity:

The antibody was affinity-purified from rabbit antiserum by affinity-chromatography using epitope-specific im-

munogen and the purity is > 95% (by SDS-PAGE).

Applications:

IHC: 1:50~1:200

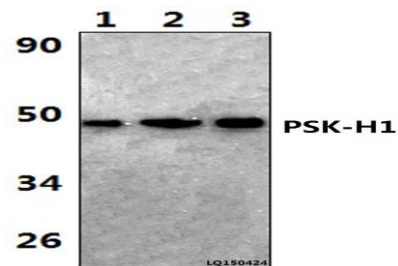
Storage&Stability:

Store at 4 °C short term. Aliquot and store at -20 °C long term. Avoid freeze-thaw cycles.

Specificity:

PSK-H1 (M295) polyclonal antibody detects endogenous levels of PSK-H1 protein.

DATA:



Note:

For research use only, not for use in diagnostic procedure.

Bioworld Technology, Inc.

Add: 1660 South Highway 100, Suite 500 St. Louis Park, MN 55416, USA.

Email: info@bioworld.com

Tel: 6123263284

Fax: 6122933841

Bioworld technology, co. Ltd.

Add: No 9, weidi road Qixia District Nanjing, 210046, P. R. China.

Email: info@biogot.com

Tel: 0086-025-68037686

Fax: 0086-025-68035151