

## Flt3-L (H206) polyclonal antibody

Catalog: BS2280

Host: Rabbit

Reactivity: Human, Mouse, Rat

### Background:

Flt 3 ligand (Flt 3-L), variously designated Flt 3/Flk 2 ligand or FL, is a 17 kDa hematopoietic growth factor that stimulates the proliferation of stem and CD34+ progenitor cells and has been cloned from both mouse and human genomes. Flt 3-L is a potent in vitro growth stimulator of granulocytemacrophage colony-stimulating factor (GM-CSF), interleukin-3 (IL-3), and G-CSF-dependent granulocyte-macrophage committed precursors from Lin CD34+ bone marrow cells as well as other primitive B cell populations. Additionally, Flt 3-L stimulates the proliferation of hematopoietic progenitor cells isolated from mouse fetal liver or adult mouse bone marrow. Flt 3-L does not, however, affect the growth of erythroid-committed progenitors. A Flt-3 ligand exists in two forms and is active as both a soluble and as a membrane-bound ligand. The Flt 3-L receptor, Flt 3, is a tyrosine kinase expressed on CD34+ cells that shares a high degree of homology with the SCF (stem cell factor) receptor, c-Kit and c-Fms.

### Product:

1 mg/ml in Phosphate buffered saline (PBS) with 0.05% sodium azide, approx. pH 7.2.

### Molecular Weight:

~ 26 kDa

### Swiss-Prot:

P49771

### Purification&Purity:

The antibody was affinity-purified from rabbit antiserum by affinity-chromatography using epitope-specific im-

munogen and the purity is > 95% (by SDS-PAGE).

### Applications:

WB: 1:500~1:1000

IHC: 1:50~1:200

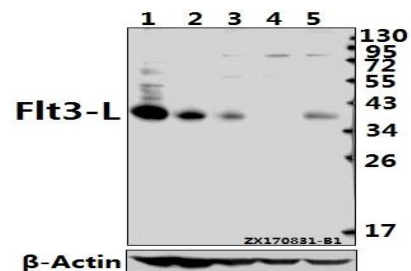
### Storage&Stability:

Store at 4 °C short term. Aliquot and store at -20 °C long term. Avoid freeze-thaw cycles.

### Specificity:

Flt3-L (H206) polyclonal antibody detects endogenous levels of Flt3-L protein.

### DATA:



Western blot (WB) analysis of Flt3-L (H206) pAb at 1:500 dilution

Lane1:CT26 whole cell lysate(40ug)

Lane2:C6 whole cell lysate(40ug)

Lane3:HepG2 whole cell lysate(40ug)

Lane4:K562 whole cell lysate(40ug)

Lane5:MCF-7 whole cell lysate(40ug)

### Note:

For research use only, not for use in diagnostic procedure.

### Bioworld Technology, Inc.

Add: 1660 South Highway 100, Suite 500 St. Louis Park, MN 55416, USA.

Email: [info@bioworld.com](mailto:info@bioworld.com)

Tel: 6123263284

Fax: 6122933841

### Bioworld technology, co. Ltd.

Add: No 9, weidi road Qixia District Nanjing, 210046, P. R. China.

Email: [info@biogot.com](mailto:info@biogot.com)

Tel: 0086-025-68037686

Fax: 0086-025-68035151