

## IRX1 (D231) polyclonal antibody

Catalog: BS2291

Host: Rabbit

Reactivity: Human, Mouse, Rat

### Background:

The IRXA group includes Irx1, Irx2 and Irx4; the IRXB group is comprised of Irx3, Irx5 and Irx6. Irx1 and Irx2 are both widely expressed during development in the lung epithelium and also in the ventricular septum. Irx1 and Irx2 also play a role in digit formation (E11.5–E14.5). The Irx gene family members are each expressed in a distinct pattern during mouse heart development. Specifically, Irx1 and Irx2 are expressed in the ventricular septum and Irx3 is expressed in the ventricular trabeculated myocardium. In addition, Irx4 is expressed in the linear heart tube and the AV canal;

### Product:

Rabbit IgG, 1mg/ml in PBS with 0.02% sodium azide, 50% glycerol, pH7.2

### Molecular Weight:

~ 47 kDa

### Swiss-Prot:

P78414

### Purification&Purity:

The antibody was affinity-purified from rabbit antiserum by affinity-chromatography using epitope-specific immunogen and the purity is > 95% (by SDS-PAGE).

### Applications:

IHC: 1:50~1:200

IF: 1:50~1:200

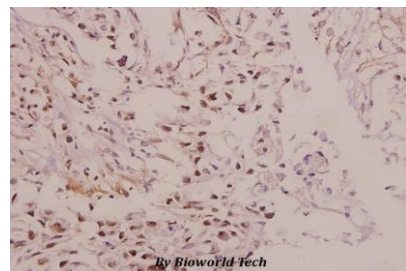
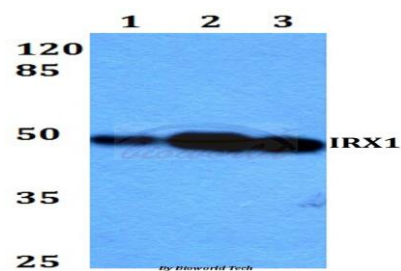
### Storage&Stability:

Store at 4 °C short term. Aliquot and store at -20 °C long term. Avoid freeze-thaw cycles.

### Specificity:

IRX1 (D231) polyclonal antibody detects endogenous levels of IRX1 protein.

### DATA:



Immunohistochemistry (IHC) analyzes of IRX1 (D231) pAb in paraffin-embedded human colorectal carcinoma tissue at 1:50.

### Note:

For research use only, not for use in diagnostic procedure.

### Bioworld Technology, Inc.

Add: 1660 South Highway 100, Suite 500 St. Louis Park, MN 55416, USA.

Email: [info@bioworld.com](mailto:info@bioworld.com)

Tel: 6123263284

Fax: 6122933841

### Bioworld technology, co. Ltd.

Add: No 9, weidi road Qixia District Nanjing, 210046, P. R. China.

Email: [info@biogol.com](mailto:info@biogol.com)

Tel: 0086-025-68037686

Fax: 0086-025-68035151