

## TAF I p48 (R318) polyclonal antibody

Catalog: BS2313

Host: Rabbit

Reactivity: Human,Rat

### BackGround:

For gene transcription governed by RNA polymerase I, the human transcription factor SL1 (mouse TIF-IB) directs the assembly of initiation complexes at the promoter. Like TFIID, which directs transcription by RNA polymerase II, SL1/TIF-IB contains the TATA-binding protein (TBP) and a set of TBP-associated factors (TAFs). The three TAF I subunits, hTAF I p110, hTAF I p63 and hTAF p48 (or mouse TAF I p95, TAF I p68 and TAF I p48) are all integral components of SL1/TIF-IB. The mutually exclusive binding of either TAF I or TAF II subunits to TBP is believed to direct the formation of promoter and RNA polymerase-specific complexes.

### Product:

Rabbit IgG, 1mg/ml in PBS with 0.02% sodium azide, 50% glycerol, pH7.2

### Molecular Weight:

~ 53 kDa

### Swiss-Prot:

Q15573

### Purification&Purity:

The antibody was affinity-purified from rabbit antiserum by affinity-chromatography using epitope-specific immunogen and the purity is > 95% (by SDS-PAGE).

### Applications:

WB: 1:500~1:1000

IHC: 1:50~1:200

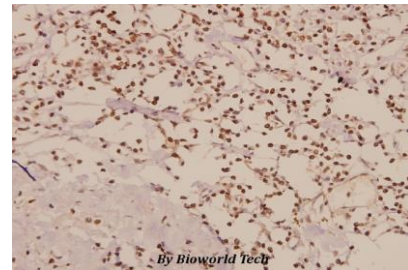
### Storage&Stability:

Store at 4 °C short term. Aliquot and store at -20 °C long term. Avoid freeze-thaw cycles.

### Specificity:

TAF I p48 (R318) polyclonal antibody detects endogenous levels of TAF I p48 protein.

### DATA:



Immunohistochemistry (IHC) analyzes of TAF I p48 (R318) pAb in paraffin-embedded human breast carcinoma tissue at 1:50.

### Note:

For research use only, not for use in diagnostic procedure.

### Bioworld Technology, Inc.

Add: 1660 South Highway 100, Suite 500 St. Louis Park, MN 55416, USA.

Email: [info@bioworld.com](mailto:info@bioworld.com)

Tel: 6123263284

Fax: 6122933841

### Bioworld technology, co. Ltd.

Add: No 9, weidi road Qixia District Nanjing, 210046, P. R. China.

Email: [info@biogot.com](mailto:info@biogot.com)

Tel: 0086-025-68037686

Fax: 0086-025-68035151