

CdcA3 (E251) polyclonal antibody

Catalog: BS2398

Host: Rabbit

Reactivity: Human, Mouse, Rat

BackGround:

CdcA3 (Cell division cycle-associated protein 3), also known as TOME1 (Trigger of mitotic entry protein 1) and GRCC8 (Gene-rich cluster protein C8), is a 268 amino acid cytoplasmic protein that is required for entry into mitosis. By participating with E3 ligase complexes, CdcA3 is involved in ubiquitination and degradation of the mitosis-inhibitory kinase Wee 1, leading to the dephosphorylation of Cdc2 in the late G2 phase. CdcA3 itself is targeted for destruction by anaphase promoting complex (APC) in the G1 phase of the cell cycle, then allowing for Wee 1 accumulation during interphase.

Product:

1 mg/ml in Phosphate buffered saline (PBS) with 0.05% sodium azide, approx. pH 7.2.

Molecular Weight:

~ 29 kDa

Swiss-Prot:

Q99618

Purification&Purity:

The antibody was affinity-purified from rabbit antiserum by affinity-chromatography using epitope-specific immunogen and the purity is > 95% (by SDS-PAGE).

Applications:

WB: 1:500~1:1000

IHC: 1:50~1:200

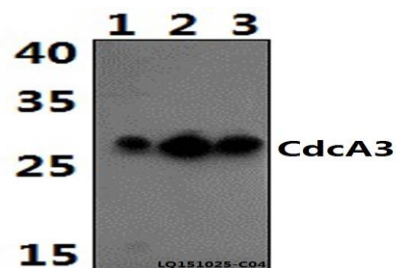
Storage&Stability:

Store at 4 °C short term. Aliquot and store at -20 °C long term. Avoid freeze-thaw cycles.

Specificity:

CdcA3 (E251) polyclonal antibody detects endogenous levels of CdcA3 protein.

DATA:



Western blot (WB) analysis of CdcA3 (E251) polyclonal antibody at 1:500 dilution

Lane1:HepG2 whole cell lysate(40ug)

Lane2:H9C2 whole cell lysate(30ug)

Lane3:RAW264.7 whole cell lysate(30ug)

Note:

For research use only, not for use in diagnostic procedure.

Bioworld Technology, Inc.

Add: 1660 South Highway 100, Suite 500 St. Louis Park, MN 55416, USA.

Email: info@bioworld.com

Tel: 6123263284

Fax: 6122933841

Bioworld technology, co. Ltd.

Add: No 9, weidi road Qixia District Nanjing, 210046, P. R. China.

Email: info@biogot.com

Tel: 0086-025-68037686

Fax: 0086-025-68035151