

## WWOX (A7) polyclonal antibody

Catalog: BS2426

Host: Rabbit

Reactivity: Human, Mouse, Rat

### BackGround:

WWOX (WW domain containing oxidoreductase) protein is a candidate tumor suppressor consisting of two WW domains that influence protein-protein interactions, and a short chain dehydrogenase (SDR) domain, that influences sex-steroid metabolism. Modulation of the WWOX gene influences esophageal squamous cell carcinogenesis and tumorigenicity of breast cancer cell lines MDA-MB-435 and T47D. The murine homolog WOX1 localizes in the mitochondria, and contains a mitochondrial targeting sequence mapping within the SDR domain. JNK1 can physically associate with WOX1 and sequester WOX1-dependent apoptosis.

### Product:

Rabbit IgG, 1mg/ml in PBS with 0.02% sodium azide, 50% glycerol, pH7.2

### Molecular Weight:

~ 47 kDa

### Swiss-Prot:

Q9NZC7

### Purification&Purity:

The antibody was affinity-purified from rabbit antiserum by affinity-chromatography using epitope-specific immunogen and the purity is > 95% (by SDS-PAGE).

### Applications:

WB: 1:500~1:1000

IHC: 1:50~1:200

IF: 1:50~1:200

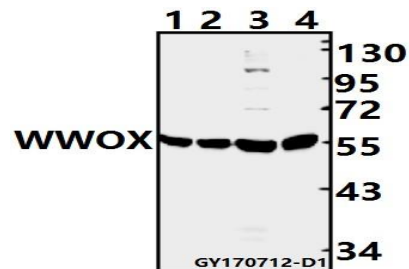
### Storage&Stability:

Store at 4 °C short term. Aliquot and store at -20 °C long term. Avoid freeze-thaw cycles.

### Specificity:

WWOX (A7) polyclonal antibody detects endogenous levels of WWOX protein.

### DATA:



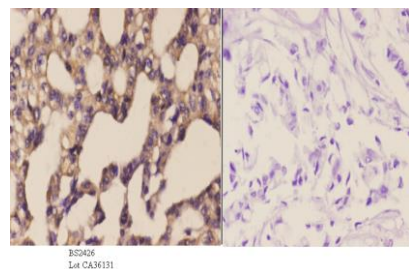
Western blot (WB) analysis of WWOX (A7) polyclonal antibody at 1:500 dilution

Lane1: The Testis tissue lysate of Mouse(40ug)

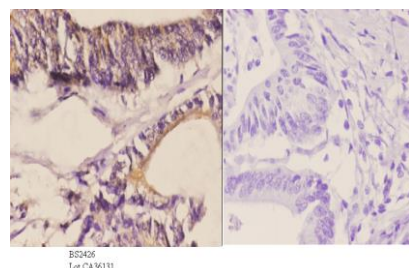
Lane2: The Testis tissue lysate of Rat(40ug)

Lane3: SK-OVCAR3 whole cell lysate(40ug)

Lane4: A2780 whole cell lysate(40ug)



Immunohistochemistry (IHC) analyzes of WWOX (A7) pAb in paraffin-embedded human breast carcinoma tissue at 1:50. showing cytoplasmic and nucleus staining. Negative control (the right) Using PBS instead of primary antibody, secondary antibody is Goat Anti-Rabbit IgG-biotin followed by avidin-peroxidase.



Immunohistochemistry (IHC) analyzes of WWOX (A7) pAb in paraffin-embedded human colon carcinoma tissue at 1:50. showing cytoplasmic and nucleus staining. Negative control (the right) Using PBS instead of primary antibody, secondary antibody is Goat Anti-Rabbit IgG-biotin

### Bioworld Technology, Inc.

Add: 1660 South Highway 100, Suite 500 St. Louis Park, MN 55416, USA.

Email: [info@bioworld.com](mailto:info@bioworld.com)

Tel: 6123263284

Fax: 6122933841

### Bioworld technology, co. Ltd.

Add: No 9, weidi road Qixia District Nanjing, 210046, P. R. China.

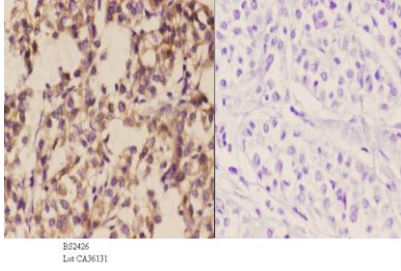
Email: [info@biogot.com](mailto:info@biogot.com)

Tel: 0086-025-68037686

Fax: 0086-025-68035151



followed by avidin-peroxidase.



Immunohistochemistry (IHC) analyzes of WWOX (A7) pAb in paraffin-embedded human liver carcinoma tissue at 1:50, showing cytoplasmic and nucleus staining. Negative control (the right) Using PBS instead

of primary antibody, secondary antibody is Goat Anti-Rabbit IgG-biotin followed by avidin-peroxidase.

**Note:**

For research use only, not for use in diagnostic procedure.

**Bioworld Technology, Inc.**

Add: 1660 South Highway 100, Suite 500 St. Louis Park, MN 55416, USA.

Email: [info@bioworld.com](mailto:info@bioworld.com)

Tel: 6123263284

Fax: 6122933841

**Bioworld technology, co. Ltd.**

Add: No 9, weidi road Qixia District Nanjing, 210046, P. R. China.

Email: [info@biogot.com](mailto:info@biogot.com)

Tel: 0086-025-68037686

Fax: 0086-025-68035151