

## LMX1B (D159) polyclonal antibody

Catalog: BS2457

Host: Rabbit

Reactivity: Human, Mouse, Rat

### BackGround:

The Lim class homeobox gene Lmx1b is required for the normal development of the dopaminergic system. Loss of dopaminergic neurons is associated with one of the most prominent human neurological disorders, Parkinson's disease (PD). Dopaminergic neurons play an important role in the control of multiple brain functions including voluntary movement alongside an array of behavioral processes such as mood, reward, addiction, and stress. Lmx1b is one of several transcription factors involved in the generation of dopaminergic neurons in the brain.

### Product:

Rabbit IgG, 1mg/ml in PBS with 0.02% sodium azide, 50% glycerol, pH7.2

### Molecular Weight:

~ 42 kDa

### Swiss-Prot:

O60663

### Purification&Purity:

The antibody was affinity-purified from rabbit antiserum by affinity-chromatography using epitope-specific immunogen and the purity is > 95% (by SDS-PAGE).

### Applications:

WB: 1:500~1:1000

IHC: 1:50~1:200

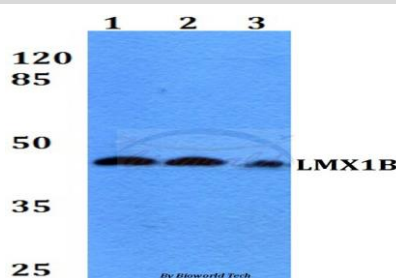
### Storage&Stability:

Store at 4 °C short term. Aliquot and store at -20 °C long term. Avoid freeze-thaw cycles.

### Specificity:

LMX1B (D159) polyclonal antibody detects endogenous levels of LMX1B protein.

### DATA:



Western blot (WB) analysis of LMX1B (D159) polyclonal antibody at 1:500 dilution

Lane1:HEK293T whole cell lysate

Lane2:Raw264.7 whole cell lysate

Lane3:PC12 whole cell lysate

### Note:

For research use only, not for use in diagnostic procedure.

### Bioworld Technology, Inc.

Add: 1660 South Highway 100, Suite 500 St. Louis Park, MN 55416, USA.

Email: [info@bioworld.com](mailto:info@bioworld.com)

Tel: 6123263284

Fax: 6122933841

### Bioworld technology, co. Ltd.

Add: No 9, weidi road Qixia District Nanjing, 210046, P. R. China.

Email: [info@biogot.com](mailto:info@biogot.com)

Tel: 0086-025-68037686

Fax: 0086-025-68035151