

## TAF5L (E323) polyclonal antibody

Catalog: BS2460

Host: Rabbit

Reactivity: Human, Mouse, Rat

### BackGround:

TAF5L (TAF5-like RNA polymerase II p300/CBP-associated factor-associated factor 65 kDa subunit 5L), also known as PAF65B, is a 589 amino acid protein that localizes to the nucleus and contains six WD repeats. Existing as a component of the PCAF histone acetylase complex, TAF5L interacts with a number of TAFs and, via this interaction, plays a role in histone acetylation and transcription initiation. Defects in the gene encoding TAF5L, which is expressed as multiple alternatively spliced isoforms, are associated with the pathogenesis of type I diabetes.

### Product:

Rabbit IgG, 1mg/ml in PBS with 0.02% sodium azide, 50% glycerol, pH7.2

### Molecular Weight:

~ 66 kDa

### Swiss-Prot:

O75529

### Purification&Purity:

The antibody was affinity-purified from rabbit antiserum by affinity-chromatography using epitope-specific immunogen and the purity is > 95% (by SDS-PAGE).

### Applications:

IHC: 1:50~1:200

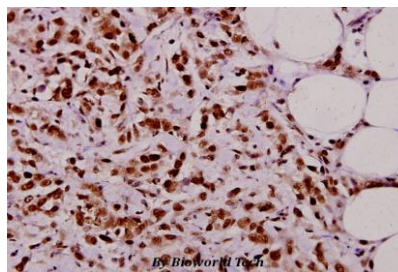
### Storage&Stability:

Store at 4 °C short term. Aliquot and store at -20 °C long term. Avoid freeze-thaw cycles.

### Specificity:

TAF5L (E323) polyclonal antibody detects endogenous levels of TAF5L protein.

### DATA:



Immunohistochemistry (IHC) analyzes of TAF5L (E323) pAb in paraffin-embedded human breast carcinoma tissue at 1:50.

### Note:

For research use only, not for use in diagnostic procedure.

### Bioworld Technology, Inc.

Add: 1660 South Highway 100, Suite 500 St. Louis Park, MN 55416, USA.

Email: [info@bioworld.com](mailto:info@bioworld.com)

Tel: 6123263284

Fax: 6122933841

### Bioworld technology, co. Ltd.

Add: No 9, weidi road Qixia District Nanjing, 210046, P. R. China.

Email: [info@biogot.com](mailto:info@biogot.com)

Tel: 0086-025-68037686

Fax: 0086-025-68035151