

LUCA15 (N261) polyclonal antibody

Catalog: BS2476

Host: Rabbit

Reactivity: Human, Mouse, Rat

BackGround:

DEF-3 and LUCA15 belong to an evolutionarily conserved family of RNA binding proteins and share similar expression patterns. Both DEF-3 and LUCA15 are highly expressed in adult heart and thymus as well as fetal kidney. Conversely, fetal thymus and adult kidney express very little DEF-3 and LUCA15. In the haemopoietic system of mice, the expression of DEF-3 is downregulated upon differentiation of progenitor cells into granulocytes but persists during macrophage development. Both DEF-3 and LUCA15 contain two zinc finger motifs, a bipartite nuclear signal and two RNA binding motifs. DEF-3 and LUCA15 are capable of specifically binding poly(G) RNA.

Product:

1 mg/ml in Phosphate buffered saline (PBS) with 0.05% sodium azide, approx. pH 7.2.

Molecular Weight:

~ 92 kDa

Swiss-Prot:

P52756

Purification&Purity:

The antibody was affinity-purified from rabbit antiserum by affinity-chromatography using epitope-specific immunogen and the purity is > 95% (by SDS-PAGE).

Applications:

WB: 1:500~1:1000

IHC: 1:50~1:200

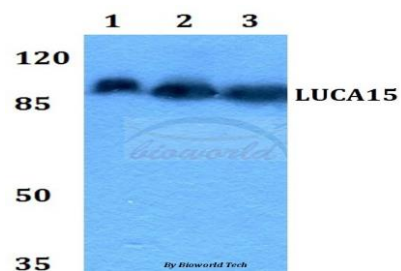
Storage&Stability:

Store at 4 °C short term. Aliquot and store at -20 °C long term. Avoid freeze-thaw cycles.

Specificity:

LUCA15 (N261) polyclonal antibody detects endogenous levels of LUCA15 protein.

DATA:

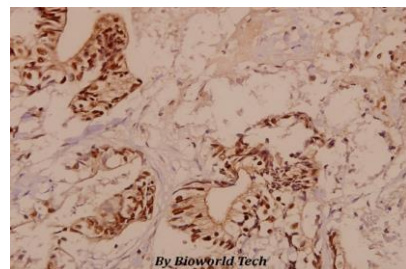


Western blot (WB) analysis of LUCA15 (N261) polyclonal antibody at 1:500 dilution

Lane1:HEK293T whole cell lysate

Lane2:Raw264.7 whole cell lysate

Lane3:H9C2 whole cell lysate



Immunohistochemistry (IHC) analyzes of LUCA15 (N261) pAb in paraffin-embedded human colorectal carcinoma tissue at 1:50.

Note:

For research use only, not for use in diagnostic procedure.

Bioworld Technology, Inc.

Add: 1660 South Highway 100, Suite 500 St. Louis Park, MN 55416, USA.

Email: info@bioworld.com

Tel: 6123263284

Fax: 6122933841

Bioworld technology, co. Ltd.

Add: No 9, weidi road Qixia District Nanjing, 210046, P. R. China.

Email: info@biogot.com

Tel: 0086-025-68037686

Fax: 0086-025-68035151