

## RhoBTB1/2 (T85) polyclonal antibody

Catalog: BS2503

Host: Rabbit

Reactivity: Human, Mouse, Rat

### Background:

RHOBTB1 (Rho-related BTB domain-containing protein 1) and RHOBTB3 (Rho-related BTB domain-containing protein 3) each contain two BTB (POZ) domains and belong to the RhoBTB subfamily of Rho GTPases. Members of the RhoBTB subfamily are evolutionarily conserved and are characterized by a proline-rich region, a GTPase domain and two tandem BTB repeats. While both RHOBTB1 and RHOBTB3 are expressed ubiquitously, RHOBTB1 is found at high levels in placenta, stomach, testis, kidney and skeletal muscle, whereas RHOBTB3 is found at high levels in neural and cardiac tissues. RHOBTB1 is thought to play a role in GTPase-mediated signaling and may participate in organization of the Actin filament system. Additionally, RHOBTB1 expression is decreased in head and neck carcinomas, suggesting a possible role for RHOBTB1 as a tumor suppressor.

### Product:

Rabbit IgG, 1mg/ml in PBS with 0.02% sodium azide, 50% glycerol, pH7.2

### Molecular Weight:

~ 83 kDa

### Swiss-Prot:

Q9BYZ6/O94844

### Purification&Purity:

The antibody was affinity-purified from rabbit antiserum by affinity-chromatography using epitope-specific immunogen and the purity is > 95% (by SDS-PAGE).

### Applications:

WB: 1:500~1:1000

IHC: 1:50~1:200

### Storage&Stability:

Store at 4 °C short term. Aliquot and store at -20 °C long

term. Avoid freeze-thaw cycles.

### Specificity:

RhoBTB1/2 (T85) polyclonal antibody detects endogenous levels of RhoBTB1/2 protein.

### DATA:



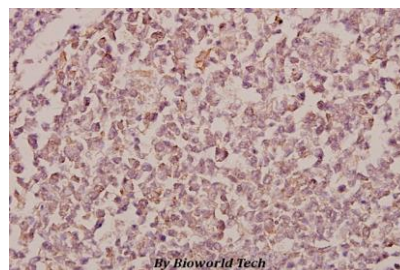
Western blot (WB) analysis of RhoBTB1/2 (T85) pAb at 1:1000 dilution

Lane1: The Kidney tissue lysate of Mouse(40ug)

Lane2: The Kidney tissue lysate of Rat(40ug)

Lane3: U-87MG whole cell lysate(40ug)

Lane4: HeLa whole cell lysate(40ug)



Immunohistochemistry (IHC) analyzes of RhoBTB1/2 (T85) pAb in paraffin-embedded human tonsil carcinoma tissue at 1:50.

### Note:

For research use only, not for use in diagnostic procedure.

### Bioworld Technology, Inc.

Add: 1660 South Highway 100, Suite 500 St. Louis Park, MN 55416, USA.

Email: [info@bioworld.com](mailto:info@bioworld.com)

Tel: 6123263284

Fax: 6122933841

### Bioworld technology, co. Ltd.

Add: No 9, weidi road Qixia District Nanjing, 210046, P. R. China.

Email: [info@biogot.com](mailto:info@biogot.com)

Tel: 0086-025-68037686

Fax: 0086-025-68035151