

SR-2B (H55) polyclonal antibody

Catalog: BS2581

Host: Rabbit

Reactivity: Human, Mouse, Rat

Background:

Serotonin (also designated 5-hydroxytryptamine or 5-HT) is a molecule that functions as a neurotransmitter, a hormone and a mitogen, and it is predominantly expressed in the gut, platelets and central nervous system (CNS). In the CNS, serotonin modulates several processes, including anxiety, sleep, appetite, behavior and drug abuse. In platelets and gut, serotonin plays a major role in cardiovascular function and motility of the gastrointestinal tract, respectively. Serotonin mediates its effects through several of G protein coupled receptors, designated 5-HT receptors or alternatively SR receptors. The SR-2 receptors are comprised of three subtypes, SR-2A, SR-2B and SR-2C, which activate phospholipase C and release intracellular stores of calcium in response to serotonin. SR-2A has a specific role in tracheal smooth muscle contraction, bronchoconstriction and mediating aldosterone production, and it is also thought to play a role in several psychiatric disorders, including depression and schizophrenia. SR-2B is expressed in embryonic and adult cardiovascular tissues, gut and brain and plays an important role in the pathology of cardiac disorders. SR-2C is thought to mediate the effects of atypical antipsychotic drugs.

Product:

1 mg/ml in Phosphate buffered saline (PBS) with 0.05% sodium azide, approx. pH 7.2.

Molecular Weight:

~ 54 kDa

Swiss-Prot:

P41595

Purification&Purity:

The antibody was affinity-purified from rabbit antiserum by affinity-chromatography using epitope-specific immunogen and the purity is > 95% (by SDS-PAGE).

Applications:

WB: 1:500~1:1000

IF: 1:50~1:200

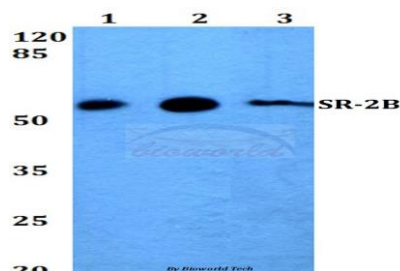
Storage&Stability:

Store at 4 °C short term. Aliquot and store at -20 °C long term. Avoid freeze-thaw cycles.

Specificity:

SR-2B (H55) polyclonal antibody detects endogenous levels of SR-2B protein.

DATA:



Western blot (WB) analysis of SR-2B (H55) polyclonal antibody at 1:500 dilution

Lane1:HEK293T whole cell lysate

Lane2:Raw264.7 whole cell lysate

Lane3:Hela whole cell lysate

Note:

For research use only, not for use in diagnostic procedure.

Bioworld Technology, Inc.

Add: 1660 South Highway 100, Suite 500 St. Louis Park, MN 55416, USA.

Email: info@bioworld.com

Tel: 6123263284

Fax: 6122933841

Bioworld technology, co. Ltd.

Add: No 9, weidi road Qixia District Nanjing, 210046, P. R. China.

Email: info@biogot.com

Tel: 0086-025-68037686

Fax: 0086-025-68035151