

APLNR (C181) polyclonal antibody

Catalog: BS2584

Host: Rabbit

Reactivity: Human, Mouse, Rat

Background:

The apelin receptor (APLNR) is a G protein-coupled integral membrane protein exhibiting a hypothalamic distribution in brain, glial cells, astrocytes and neuronal subpopulations. APLNR is bound by its cognate neuropeptide ligand, apelin, promoting receptor internalization to the nucleus and dose-dependent inhibition of forskolin-induced cAMP production. However, deletion studies of the apelin agonist have shown that internalization is not mandatory for decreasing vasopressin release, a hypotensive action of APLNR signaling. Further evidence for functional dissociation of APLNR stimulation and internalization was exhibited in vitro using mutational studies of a nuclear localization signal sequence. These findings may suggest the presence of multiple, functionally-differing conformational states for the receptor. Stress studies in rodents have shown APLNR is under negative regulation by glucocorticoids and may be involved in controlling hypothalamic function. APLNR also functions as an alternate coreceptor with CD4 for HIV-1 infection.

Product:

1 mg/ml in Phosphate buffered saline (PBS) with 15 mM sodium azide, approx. pH 7.2.

Molecular Weight:

~ 43 kDa

Swiss-Prot:

P35414

Purification&Purity:

The antibody was affinity-purified from rabbit antiserum by affinity-chromatography using epitope-specific immunogen and the purity is > 95% (by SDS-PAGE).

Applications:

WB: 1:500~1:1000

IHC: 1:50~1:200

IF: 1:50~1:200

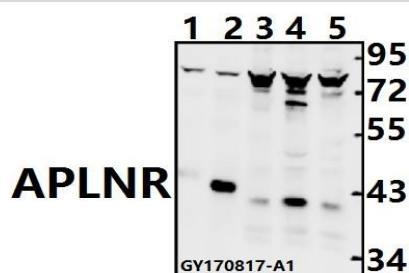
Storage&Stability:

Store at 4 °C short term. Aliquot and store at -20 °C long term. Avoid freeze-thaw cycles.

Specificity:

APLNR (C181) polyclonal antibody detects endogenous levels of APLNR protein.

DATA:



Western blot (WB) analysis of APLNR (C181) pAb at 1:500 dilution

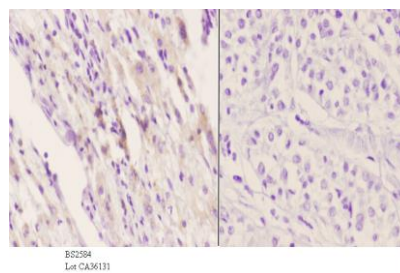
Lane1: The Heart tissue lysate of Mouse(40ug)

Lane2: The Heart tissue lysate of Rat(40ug)

Lane3: HEK293T whole cell lysate(40ug)

Lane4: A549 whole cell lysate(40ug)

Lane5: HCT116 whole cell lysate(40ug)



Immunohistochemistry (IHC) analyzes of APLNR (C181) pAb in paraffin-embedded human liver carcinoma tissue at 1:50. showing cell membrane staining. Negative control (the right) Using PBS instead of primary antibody, secondary antibody is Goat Anti-Rabbit IgG-biotin followed by avidin-peroxidase.

Note:

For research use only, not for use in diagnostic procedure.

Bioworld Technology, Inc.

Add: 1660 South Highway 100, Suite 500 St. Louis Park, MN 55416, USA.

Email: info@bioworld.com

Tel: 6123263284

Fax: 6122933841

Bioworld technology, co. Ltd.

Add: No 9, weidi road Qixia District Nanjing, 210046, P. R. China.

Email: info@biogot.com

Tel: 0086-025-68037686

Fax: 0086-025-68035151



PRODUCT DATA SHEET

Bioworld Technology, Inc.

Bioworld Technology, Inc.

Add: 1660 South Highway 100, Suite 500 St. Louis Park,
MN 55416, USA.

Email: info@bioworld.com

Tel: 6123263284

Fax: 6122933841

Bioworld technology, co. Ltd.

Add: No 9, weidi road Qixia District Nanjing, 210046,
P. R. China.

Email: info@biogot.com

Tel: 0086-025-68037686

Fax: 0086-025-68035151