

CysLTR2 (K322) polyclonal antibody

Catalog: BS2614

Host: Rabbit

Reactivity: Human, Mouse, Rat

Background:

Cysteinyl leukotriene (CysLTs) induce intracellular calcium mobilization through the binding of two distinct seven-transmembrane, G protein-coupled receptors, designated CysLT1 Receptor and CysLT2 Receptor, to induce potent bronchoconstriction. Airway smooth muscle and macrophages express both receptor types, and additionally monocytes and eosinophils express CysLT1 Receptor, while cardiac Purkinje cells, adrenal medulla, peripheral blood leukocytes and brain also utilize CysLT2 Receptor. The effects of the CysLT Receptors can be blocked by antagonists, indicating a therapeutic mechanism for the treatment of asthma and allergies.

Product:

Rabbit IgG, 1mg/ml in PBS with 0.02% sodium azide, 50% glycerol, pH7.2

Molecular Weight:

~ 40 kDa

Swiss-Prot:

Q9NS75

Purification&Purity:

The antibody was affinity-purified from rabbit antiserum by affinity-chromatography using epitope-specific immunogen and the purity is > 95% (by SDS-PAGE).

Applications:

WB: 1:500~1:1000

IHC: 1:50~1:200

IF: 1:50~1:200

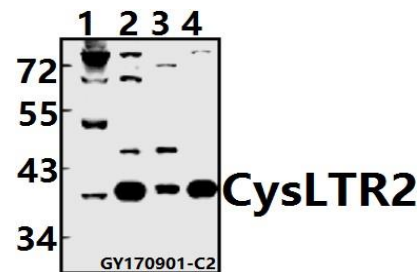
Storage&Stability:

Store at 4 °C short term. Aliquot and store at -20 °C long term. Avoid freeze-thaw cycles.

Specificity:

CysLTR2 (K322) polyclonal antibody detects endogenous levels of CysLTR2 protein.

DATA:



Western blot (WB) analysis of CysLTR2 (K322) pAb at 1:1000 dilution

Lane1:K562 whole cell lysate(40ug)

Lane2:Hela whole cell lysate(20ug)

Lane3:H9C2 whole cell lysate(10ug)

Lane4:3T3-L1 whole cell lysate(10ug)

Note:

For research use only, not for use in diagnostic procedure.

Bioworld Technology, Inc.

Add: 1660 South Highway 100, Suite 500 St. Louis Park, MN 55416, USA.

Email: info@bioworld.com

Tel: 6123263284

Fax: 6122933841

Bioworld technology, co. Ltd.

Add: No 9, weidi road Qixia District Nanjing, 210046, P. R. China.

Email: info@biogot.com

Tel: 0086-025-68037686

Fax: 0086-025-68035151