

## NPY1-R (R254) polyclonal antibody

Catalog: BS2634

Host: Rabbit

Reactivity: Human, Mouse, Rat

### BackGround:

Neuropeptide Y (NPY) is one of the most abundant neuropeptides in the mammalian nervous system and exhibits a diverse range of important physiologic activities, including effects on psychomotor activity, food intake, regulation of central endocrine secretion, and potent vasoactive effects on the cardiovascular system. There are two major subtypes of NPY (Y1 and Y2). The NPY Y1 receptors have been identified in a variety of tissues, including brain, spleen, small intestine, kidney, testis, placenta, breast, colon, ganglion, heart, and aortic smooth muscle. The Y2 receptor is found mainly in the central nervous system.

NPY receptors are a member of the G protein-coupled receptor superfamily.

### Product:

Rabbit IgG, 1mg/ml in PBS with 0.02% sodium azide, 50% glycerol, pH7.2

### Molecular Weight:

~ 44 kDa

### Swiss-Prot:

P25929

### Purification&Purity:

The antibody was affinity-purified from rabbit antiserum

by affinity-chromatography using epitope-specific immunogen and the purity is > 95% (by SDS-PAGE).

### Applications:

IHC: 1:50~1:200

IF: 1:50~1:200

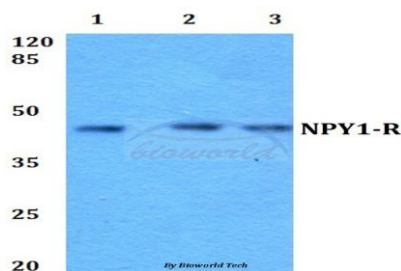
### Storage&Stability:

Store at 4 °C short term. Aliquot and store at -20 °C long term. Avoid freeze-thaw cycles.

### Specificity:

NPY1-R (R254) polyclonal antibody detects endogenous levels of NPY1-R protein.

### DATA:



### Note:

For research use only, not for use in diagnostic procedure.

### Bioworld Technology, Inc.

Add: 1660 South Highway 100, Suite 500 St. Louis Park, MN 55416, USA.

Email: [info@bioworld.com](mailto:info@bioworld.com)

Tel: 6123263284

Fax: 6122933841

### Bioworld technology, co. Ltd.

Add: No 9, weidi road Qixia District Nanjing, 210046, P. R. China.

Email: [info@biogot.com](mailto:info@biogot.com)

Tel: 0086-025-68037686

Fax: 0086-025-68035151