

AT1 (L143) polyclonal antibody

Catalog: BS2709

Host: Rabbit

Reactivity: Human, Mouse, Rat

BackGround:

AT1 receptor for angiotensin II. Angiotensin II is a potent vasopressor hormone and a primary regulator of aldosterone secretion. It is an important effector controlling blood pressure and volume in the cardiovascular system. Mediates the major cardiovascular effects of angiotensin II. May play role in the generation of reperfusion arrhythmias following restoration of blood flow to ischemic or infarcted myocardium. Mediates its action by association with G proteins that activate a phosphatidylinositol-calcium second messenger system.

Product:

1 mg/ml in Phosphate buffered saline (PBS) with 15 mM sodium azide, approx. pH 7.2.

Molecular Weight:

~40 kDa

Swiss-Prot:

P30556

Purification&Purity:

The antibody was affinity-purified from rabbit antiserum by affinity-chromatography using epitope-specific immunogen and the purity is > 95% (by SDS-PAGE).

Applications:

WB: 1:500~1:1000

IF: 1:50~1:200

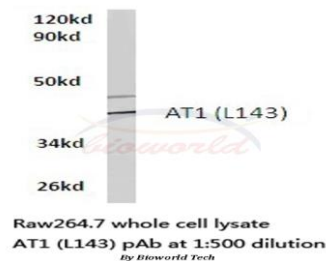
Storage&Stability:

Store at 4 °C short term. Aliquot and store at -20 °C long term. Avoid freeze-thaw cycles.

Specificity:

AT1 (L143) polyclonal antibody detects endogenous levels of AT1 protein.

DATA:



Western blot (WB) analysis of Adenosine AT1 (L143) polyclonal antibody in extracts from raw264.7 cells.

Note:

For research use only, not for use in diagnostic procedure.

Bioworld Technology, Inc.

Add: 1660 South Highway 100, Suite 500 St. Louis Park, MN 55416, USA.

Email: info@bioworld.com

Tel: 6123263284

Fax: 6122933841

Bioworld technology, co. Ltd.

Add: No 9, weidi road Qixia District Nanjing, 210046, P. R. China.

Email: info@biogot.com

Tel: 0086-025-68037686

Fax: 0086-025-68035151