

Frizzled-8 (K528) polyclonal antibody

Catalog: BS2715

Host: Rabbit

Reactivity: Human, Mouse, Rat

Background:

The frizzled gene, originally identified in *Drosophila melanogaster*, is involved in the development of tissue polarity. The mammalian homolog of frizzled, as well as several secreted mammalian frizzled-related proteins (FRPs), have been described. The frizzled proteins contain seven transmembrane domains, a cysteine-rich domain in the extracellular region and a carboxy-terminal Ser/Thr-xxx-Val motif. They function as receptors for Wnt and are generally coupled to G proteins. The cysteine-rich domain of frizzled-8 blocks endogenous Wnts and the effects of Wnt-1 and Wnt-5 on proliferation. The mouse frizzled-8 gene, which encodes a Wnt receptor, is a potent cancer-associated activator of the β -catenin-TCF pathway. The frizzled-8 gene contains no introns. Frizzled-8 mRNA has been detected in fetal brain and kidney, and also in adult pancreas, skeletal muscle, kidney and heart. Frizzled is highly expressed in HeLa S3 (cervical uterus cancer) cells and A549 lung cancer cells.

Product:

Rabbit IgG, 1mg/ml in PBS with 0.02% sodium azide, 50% glycerol, pH7.2

Molecular Weight:

~ 70 kDa

Swiss-Prot:

Q9H461

Purification&Purity:

The antibody was affinity-purified from rabbit antiserum by affinity-chromatography using epitope-specific immunogen and the purity is > 95% (by SDS-PAGE).

Applications:

WB: 1:500~1:1000

IHC: 1:50~1:200

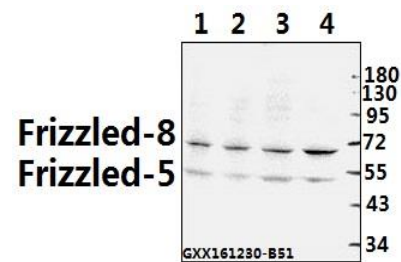
Storage&Stability:

Store at 4 °C short term. Aliquot and store at -20 °C long term. Avoid freeze-thaw cycles.

Specificity:

Frizzled-8 (K528) polyclonal antibody detects endogenous levels of Frizzled-8 protein.

DATA:



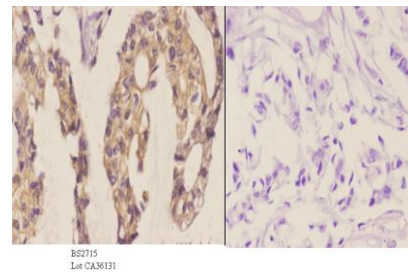
Western blot (WB) analysis of Frizzled-8 (K528) polyclonal antibody at 1:500 dilution

Lane1:PC12 whole cell lysate(40ug)

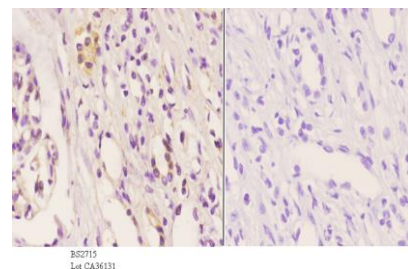
Lane2:BV2 whole cell lysate(40ug)

Lane3:H1792 whole cell lysate(40ug)

Lane4:COS-7 whole cell lysate(40ug)



Immunohistochemistry (IHC) analyzes of Frizzled-8 (K528) pAb in paraffin-embedded human breast carcinoma tissue at 1:50. showing cell membrane staining. Negative control (the right) Using PBS instead of primary antibody, secondary antibody is Goat Anti-Rabbit IgG-biotin followed by avidin-peroxidase.



Bioworld Technology, Inc.

Add: 1660 South Highway 100, Suite 500 St. Louis Park, MN 55416, USA.

Email: info@bioworld.com

Tel: 6123263284

Fax: 6122933841

Bioworld technology, co. Ltd.

Add: No 9, weidi road Qixia District Nanjing, 210046, P. R. China.

Email: info@biogot.com

Tel: 0086-025-68037686

Fax: 0086-025-68035151



PRODUCT DATA SHEET

Bioworld Technology, Inc.

Immunohistochemistry (IHC) analyzes of Frizzled-8 (K528) pAb in paraffin-embedded human kidney carcinoma tissue at 1:50. showing cell membrane staining. Negative control (the right) Using PBS instead of primary antibody, secondary antibody is Goat Anti-Rabbit IgG-biotin followed by avidin-peroxidase.

Note:

For research use only, not for use in diagnostic procedure.

Bioworld Technology, Inc.

Add: 1660 South Highway 100, Suite 500 St. Louis Park,
MN 55416, USA.

Email: info@bioworld.com

Tel: 6123263284

Fax: 6122933841

Bioworld technology, co. Ltd.

Add: No 9, weidi road Qixia District Nanjing, 210046,
P. R. China.

Email: info@biogot.com

Tel: 0086-025-68037686

Fax: 0086-025-68035151