

## Histone H2A.X (K128) polyclonal antibody

Catalog: BS2745

Host: Rabbit

Reactivity: Human, Mouse, Rat

### BackGround:

H2A.X is a member of the histone H2A family, 1 of 5 families of histone proteins involved in nucleosomal organization of chromatin. H2A.X is synthesised in G1 as well as S phase and is known to be important for recombination between immunoglobulin switch regions. A very early step in the response of mammalian cells to DNA double-strand breaks is the phosphorylation of histone H2A.X at serine 139 at the sites of DNA damage. There is a predicted acetylation at residue 1 and ubiquitination at residue 119. Phosphorylated H2A.X promotes DNA repair and maintains genomic stability.

### Product:

1 mg/ml in Phosphate buffered saline (PBS) with 0.05% sodium azide, approx. pH 7.2.

### Molecular Weight:

~ 15 kDa

### Swiss-Prot:

P16104

### Purification&Purity:

The antibody was affinity-purified from rabbit antiserum by affinity-chromatography using epitope-specific immunogen and the purity is > 95% (by SDS-PAGE).

### Applications:

WB: 1:500~1:1000

IHC: 1:50~1:200

IF: 1:50~1:200

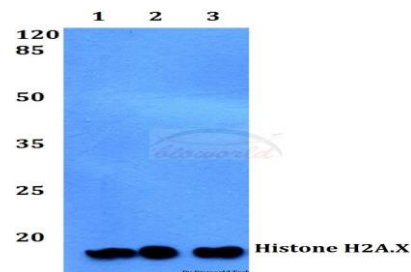
### Storage&Stability:

Store at 4 °C short term. Aliquot and store at -20 °C long term. Avoid freeze-thaw cycles.

### Specificity:

Histone H2A.X (K128) polyclonal antibody detects endogenous levels of Histone H2A.X protein.

### DATA:



Western blot (WB) analysis of Histone H2A.X (K128) pAb at 1:500 dilution

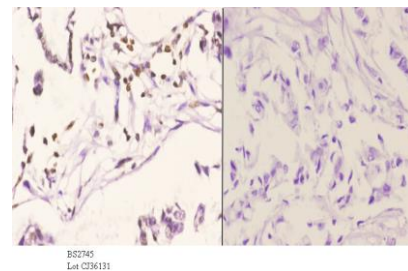
Lane1:HCT116 whole cell lysate(40ug)

Lane2:A549 whole cell lysate(40ug)

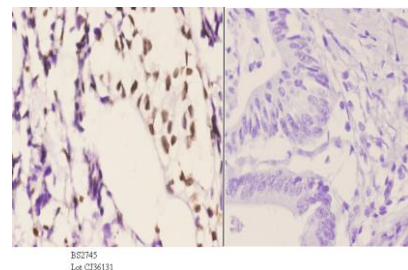
Lane3:Panc1 whole cell lysate(40ug)

Lane4:CT26 whole cell lysate(40ug)

Lane5:C6 whole cell lysate(40ug)



Immunohistochemistry (IHC) analyzes of Histone H2A.X (K128) pAb in paraffin-embedded human breast carcinoma tissue at 1:50. showing nucleus staining. Negative control (the right) Using PBS instead of primary antibody, secondary antibody is Goat Anti-Rabbit IgG-biotin followed by avidin-peroxidase.



Immunohistochemistry (IHC) analyzes of Histone H2A.X (K128) pAb in paraffin-embedded human colon carcinoma tissue at 1:50. showing nucleus staining. Negative control (the right) Using PBS instead of pri-

### Bioworld Technology, Inc.

Add: 1660 South Highway 100, Suite 500 St. Louis Park, MN 55416, USA.

Email: [info@bioworld.com](mailto:info@bioworld.com)

Tel: 6123263284

Fax: 6122933841

### Bioworld technology, co. Ltd.

Add: No 9, weidi road Qixia District Nanjing, 210046, P. R. China.

Email: [info@biogot.com](mailto:info@biogot.com)

Tel: 0086-025-68037686

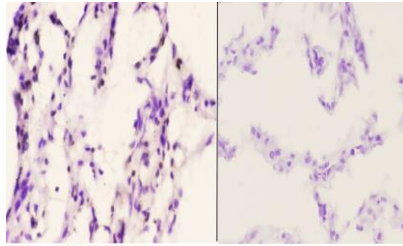
Fax: 0086-025-68035151



## PRODUCT DATA SHEET

Bioworld Technology, Inc.

primary antibody, secondary antibody is Goat Anti-Rabbit IgG-biotin followed by avidin-peroxidase.



B02745  
Lot C296131

Immunohistochemistry (IHC) analyzes of Histone H2A.X (K128) pAb in paraffin-embedded human lung carcinoma tissue at 1:50. showing nucleus staining. Negative control (the right) Using PBS instead of primary antibody, secondary antibody is Goat Anti-Rabbit IgG-biotin followed

by avidin-peroxidase.

### Note:

For research use only, not for use in diagnostic procedure.

### Bioworld Technology, Inc.

Add: 1660 South Highway 100, Suite 500 St. Louis Park, MN 55416, USA.

Email: [info@bioworld.com](mailto:info@bioworld.com)

Tel: 6123263284

Fax: 6122933841

### Bioworld technology, co. Ltd.

Add: No 9, weidi road Qixia District Nanjing, 210046, P. R. China.

Email: [info@biogot.com](mailto:info@biogot.com)

Tel: 0086-025-68037686

Fax: 0086-025-68035151