

## MLH3 (R546) polyclonal antibody

Catalog: BS2762

Host: Rabbit

Reactivity: Human, Mouse, Rat

### Background:

DNA mismatch repair (MMR) is essential for maintaining the integrity of the genome during replication. This process is highly conserved across bacterial and eukaryotic systems, as many of the genes expressed in bacteria are closely related to the yeast and mammalian homologs. In bacteria two proteins, MutS and MutL, form homodimeric complexes that are responsible for recognizing and facilitating MMR. Human homologs of these proteins include MSH2 and MSH3 (MutS homolog 2 and 3), and the corresponding human homologs of MutL are MLH1, PMS1, PMS2 and MLH3. MSH2 and MSH3 form heterodimers that cooperatively mediate MMR. MLH3 preferentially dimerizes with MLH1 to repair DNA mismatches and restore the stability to the genome. Mutations in the genes encoding MSH2 and MLH1 induce microsatellite instability of the DNA. These mutations are associated with the occurrence of hereditary nonpolyposis colorectal cancer (HNPCC) and are a common feature in the progression of many other cancers.

### Product:

1 mg/ml in Phosphate buffered saline (PBS) with 0.05% sodium azide, approx. pH 7.2.

### Molecular Weight:

~ 164 kDa

### Swiss-Prot:

Q9UHC1

### Purification&Purity:

The antibody was affinity-purified from rabbit antiserum by affinity-chromatography using epitope-specific im-

munogen and the purity is > 95% (by SDS-PAGE).

### Applications:

WB: 1:500~1:1000

IHC: 1:50~1:200

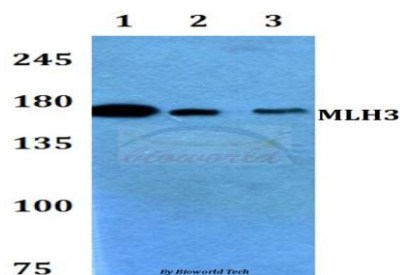
### Storage&Stability:

Store at 4 °C short term. Aliquot and store at -20 °C long term. Avoid freeze-thaw cycles.

### Specificity:

MLH3 (R546) polyclonal antibody detects endogenous levels of MLH3 protein.

### DATA:



Western blot (WB) analysis of MLH3 (R546) polyclonal antibody at 1:500 dilution

Lane1:HEK293T whole cell lysate

Lane2:Raw264.7 whole cell lysate

Lane3:PC12 whole cell lysate

### Note:

For research use only, not for use in diagnostic procedure.

### Bioworld Technology, Inc.

Add: 1660 South Highway 100, Suite 500 St. Louis Park, MN 55416, USA.

Email: [info@bioworld.com](mailto:info@bioworld.com)

Tel: 6123263284

Fax: 6122933841

### Bioworld technology, co. Ltd.

Add: No 9, weidi road Qixia District Nanjing, 210046, P. R. China.

Email: [info@biogot.com](mailto:info@biogot.com)

Tel: 0086-025-68037686

Fax: 0086-025-68035151