

## CPN1 (M25) polyclonal antibody

Catalog: BS2872

Host: Rabbit

Reactivity: Human

### BackGround:

Carboxypeptidase N (arginine carboxypeptidase or CPN) cleaves basic amino acid residues from the carboxy terminal of peptides and proteins. The enzyme plays a central role in regulating the biologic activity of peptides such as kinins and anaphylatoxins, and therefore is also known as kininase-1 and anaphylatoxin inactivator. CPN is a tetrameric complex consisting of two identical regulatory subunits (CPN reg) and two identical catalytic subunits (CPN cat). The two glycosylated CPN reg subunits protect the two CPN cat subunits and keep them in the circulation. CPN reg is a member of the leucinerich repeat family of proteins and the gene which encodes CPN reg maps to human chromosome 8p22-p23. CPN cat is a member of the regulatory B-type carboxypeptidase group and the gene which encodes CPN cat maps to human chromosome 10.

### Product:

1 mg/ml in Phosphate buffered saline (PBS) with 0.05% sodium azide, approx. pH 7.2.

### Molecular Weight:

~ 52 kDa

### Swiss-Prot:

P15169

### Purification&Purity:

The antibody was affinity-purified from rabbit antiserum by affinity-chromatography using epitope-specific im-

munogen and the purity is > 95% (by SDS-PAGE).

### Applications:

WB: 1:500~1:1000

IHC: 1:50~1:200

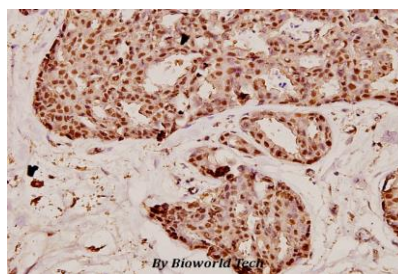
### Storage&Stability:

Store at 4 °C short term. Aliquot and store at -20 °C long term. Avoid freeze-thaw cycles.

### Specificity:

CPN1 (M25) polyclonal antibody detects endogenous levels of Carboxypeptidase N catalytic chain protein.

### DATA:



Immunohistochemistry (IHC) analyzes of CPN1 (M25) pAb in paraffin-embedded human breast carcinoma tissue at 1:100.

### Note:

For research use only, not for use in diagnostic procedure.

### Bioworld Technology, Inc.

Add: 1660 South Highway 100, Suite 500 St. Louis Park, MN 55416, USA.

Email: [info@bioworld.com](mailto:info@bioworld.com)

Tel: 6123263284

Fax: 6122933841

### Bioworld technology, co. Ltd.

Add: No 9, weidi road Qixia District Nanjing, 210046, P. R. China.

Email: [info@biogot.com](mailto:info@biogot.com)

Tel: 0086-025-68037686

Fax: 0086-025-68035151