

## GnRH I (D43) polyclonal antibody

Catalog: BS2880

Host: Rabbit

Reactivity: Human, Mouse, Rat

### Background:

GnRH is produced by hypothalamic neurons and secreted in a pulsatile manner into the capillary plexus of the median eminence. GnRH affects the release of luteinizing hormone and follicle stimulating hormone from gonadotrophic cells in the anterior pituitary. In addition to hypothalamic GnRH (GnRH I), a second GnRH form (GnRH II) functions primarily in the midbrain. GnRH is expressed in the acrosomal region of human sperm and in the anterior pituitary tissue and cancer cells. Unlike GnRH I, GnRH II is highly expressed outside the brain, particularly in the kidney, bone marrow and prostate, suggesting that it may have multiple functions. GnRH binds to a specific G protein-coupled receptor in the pituitary to regulate synthesis and secretion of gonadotropins.

### Product:

Rabbit IgG, 1mg/ml in PBS with 0.02% sodium azide, 50% glycerol, pH7.2

### Molecular Weight:

~ 11 kDa

### Swiss-Prot:

P01148

### Purification&Purity:

The antibody was affinity-purified from rabbit antiserum by affinity-chromatography using epitope-specific immunogen and the purity is > 95% (by SDS-PAGE).

### Applications:

IHC: 1:50~1:200

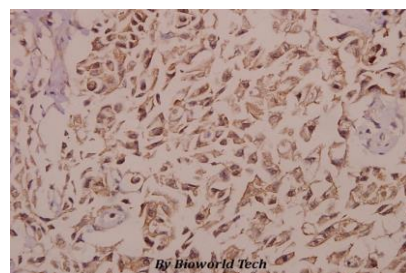
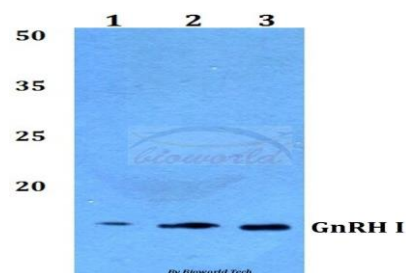
### Storage&Stability:

Store at 4 °C short term. Aliquot and store at -20 °C long term. Avoid freeze-thaw cycles.

### Specificity:

GnRH I (D43) polyclonal antibody detects endogenous levels of GnRH I protein.

### DATA:



Immunohistochemistry (IHC) analyzes of GnRH I (D43) pAb in paraffin-embedded human colorectal carcinoma tissue at 1:50.

### Note:

For research use only, not for use in diagnostic procedure.

### Bioworld Technology, Inc.

Add: 1660 South Highway 100, Suite 500 St. Louis Park, MN 55416, USA.

Email: [info@bioworld.com](mailto:info@bioworld.com)

Tel: 6123263284

Fax: 6122933841

### Bioworld technology, co. Ltd.

Add: No 9, weidi road Qixia District Nanjing, 210046, P. R. China.

Email: [info@biogol.com](mailto:info@biogol.com)

Tel: 0086-025-68037686

Fax: 0086-025-68035151