

IGF-1 (K149) polyclonal antibody

Catalog: BS2909

Host: Rabbit

Reactivity: Human, Mouse, Rat

Background:

IGF1, also named as IBP1, MGF, IGF-IA and Somatomedin-C, belongs to the insulin family. IGF1 is structurally and functionally related to insulin but have a much higher growth-promoting activity. Altered expression or mutation of IGF-1 is associated with several human disorders, including type I diabetes and various forms of cancer. Defects in IGF1 are the cause of insulin-like growth factor I deficiency (IGF1 deficiency) which is an autosomal recessive disorder characterized by growth retardation, sensorineural deafness and mental retardation. The ; is specific to isoform IGF-1A.

Product:

1 mg/ml in Phosphate buffered saline (PBS) with 0.05% sodium azide, approx. pH 7.2.

Molecular Weight:

~ 10, 22 kDa

Swiss-Prot:

P05019

Purification&Purity:

The antibody was affinity-purified from rabbit antiserum by affinity-chromatography using epitope-specific immunogen and the purity is > 95% (by SDS-PAGE).

Applications:

WB: 1:500~1:1000

IHC: 1:50~1:200

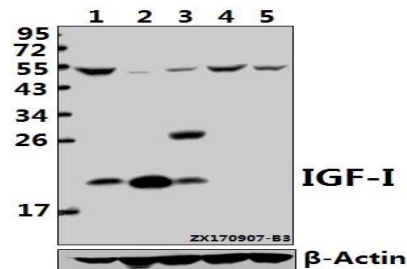
Storage&Stability:

Store at 4 °C short term. Aliquot and store at -20 °C long term. Avoid freeze-thaw cycles.

Specificity:

IGF-I (K149) polyclonal antibody detects endogenous levels of IGF-I protein

DATA:



Western blot (WB) analysis of IGF-I (K149) pAb at 1:1000 dilution

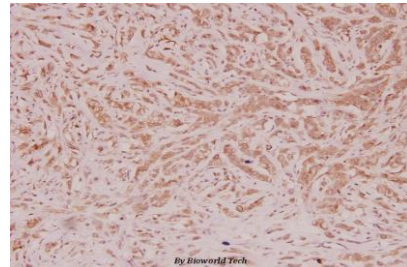
Lane1:Hela whole cell lysate(40ug)

Lane2:The Testis tissue lysate of Mouse(40ug)

Lane3:The Testis tissue lysate of Rat(40ug)

Lane4:SK-OVCAR3 whole cell lysate(40ug)

Lane5:A2780 whole cell lysate(40ug)



Immunohistochemistry (IHC) analyzes of IGF-1 (K149) pAb in paraffin-embedded human breast carcinoma tissue at 1:100.

Note:

For research use only, not for use in diagnostic procedure.

Bioworld Technology, Inc.

Add: 1660 South Highway 100, Suite 500 St. Louis Park, MN 55416, USA.

Email: info@bioworld.com

Tel: 6123263284

Fax: 6122933841

Bioworld technology, co. Ltd.

Add: No 9, weidi road Qixia District Nanjing, 210046, P. R. China.

Email: info@biogot.com

Tel: 0086-025-68037686

Fax: 0086-025-68035151