

## Ghrelin (K47) polyclonal antibody

Catalog: BS2930

Host: Rabbit

Reactivity: Human, Mouse, Rat

### BackGround:

Ghrelin was originally discovered as a preprohormone that stimulates the release of growth hormone from the anterior pituitary. Recent studies have shown that ghrelin, in concert with other hormones, helps to control both appetite and energy balance. The synthesis of ghrelin takes place predominantly in epithelial cells of the stomach, although it is also produced in smaller quantities in the placenta, kidney, pituitary and hypothalamus. Ghrelin is an endogenous ligand for the growth hormone secretagogue receptor and is involved in regulating growth hormone release from the pituitary. It has an appetite stimulating effect, induces adiposity, and stimulates gastric acid secretion, and it is involved in growth regulation.

### Product:

Rabbit IgG, 1mg/ml in PBS with 0.02% sodium azide, 50% glycerol, pH7.2

### Molecular Weight:

~ 13 kDa

### Swiss-Prot:

Q9UBU3

### Purification&Purity:

The antibody was affinity-purified from rabbit antiserum by affinity-chromatography using epitope-specific immunogen and the purity is > 95% (by SDS-PAGE).

### Applications:

IHC: 1:50~1:200

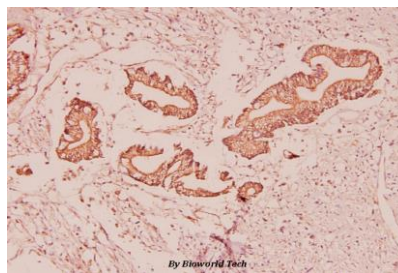
### Storage&Stability:

Store at 4 °C short term. Aliquot and store at -20 °C long term. Avoid freeze-thaw cycles.

### Specificity:

Ghrelin (K47) polyclonal antibody detects endogenous levels of Ghrelin protein.

### DATA:



Immunohistochemistry (IHC) analyzes of Ghrelin (K47) pAb in paraffin-embedded human colorectal cancer carcinoma tissue at 1:100.

### Note:

For research use only, not for use in diagnostic procedure.

### Bioworld Technology, Inc.

Add: 1660 South Highway 100, Suite 500 St. Louis Park, MN 55416, USA.

Email: [info@bioworld.com](mailto:info@bioworld.com)

Tel: 6123263284

Fax: 6122933841

### Bioworld technology, co. Ltd.

Add: No 9, weidi road Qixia District Nanjing, 210046, P. R. China.

Email: [info@biogot.com](mailto:info@biogot.com)

Tel: 0086-025-68037686

Fax: 0086-025-68035151