

TCR β (K115) polyclonal antibody

Catalog: BS2943

Host: Rabbit

Reactivity: Human, Mouse, Rat

Background:

TCR (T cell antigen receptor) recognizes foreign antigens and translates such recognition events into intracellular signals that elicit a change in the cell from a dormant to an activated state. TCR is a heterodimer composed of either alpha and beta or gamma and delta chains. The vast majority of circulating T cells (95%) express the alpha/beta heterodimer while roughly 2-5% express the gamma/delta heterodimer. CD3 chains and the CD4 or CD8 coreceptors are also required for efficient signal transduction through the TCR.

Product:

Rabbit IgG, 1mg/ml in PBS with 0.02% sodium azide, 50% glycerol, pH7.2

Molecular Weight:

~ 19 kDa

Swiss-Prot:

P01850

Purification&Purity:

The antibody was affinity-purified from rabbit antiserum by affinity-chromatography using epitope-specific immunogen and the purity is > 95% (by SDS-PAGE).

Applications:

WB: 1:500~1:1000

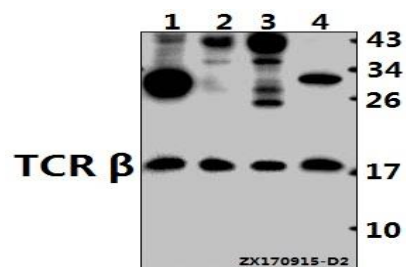
Storage&Stability:

Store at 4 °C short term. Aliquot and store at -20 °C long term. Avoid freeze-thaw cycles.

Specificity:

TCR β (K115) polyclonal antibody detects endogenous levels of TCR β protein.

DATA:



Western blot (WB) analysis of TCR β (K115) pAb at 1:500 dilution

Lane1:H1792 whole cell lysate(40ug)

Lane2:HeLa whole cell lysate(40ug)

Lane3:H9C2 whole cell lysate(40ug)

Lane4:3T3-L1 whole cell lysate(40ug)

Note:

For research use only, not for use in diagnostic procedure.

Bioworld Technology, Inc.

Add: 1660 South Highway 100, Suite 500 St. Louis Park, MN 55416, USA.

Email: info@bioworld.com

Tel: 6123263284

Fax: 6122933841

Bioworld technology, co. Ltd.

Add: No 9, weidi road Qixia District Nanjing, 210046, P. R. China.

Email: info@biogot.com

Tel: 0086-025-68037686

Fax: 0086-025-68035151