

TEBP (K107) polyclonal antibody

Catalog: BS2986

Host: Rabbit

Reactivity: Human, Mouse, Rat

Background:

Molecular chaperone that localizes to genomic response elements in a hormone-dependent manner and disrupts receptor-mediated transcriptional activation, by promoting disassembly of transcriptional regulatory complexes.

Product:

Rabbit IgG, 1mg/ml in PBS with 0.02% sodium azide, 50% glycerol, pH7.2

Molecular Weight:

~ 18 kDa

Swiss-Prot:

Q15185

Purification&Purity:

The antibody was affinity-purified from rabbit antiserum by affinity-chromatography using epitope-specific immunogen and the purity is > 95% (by SDS-PAGE).

Applications:

WB: 1:500~1:1000

IHC: 1:50~1:200

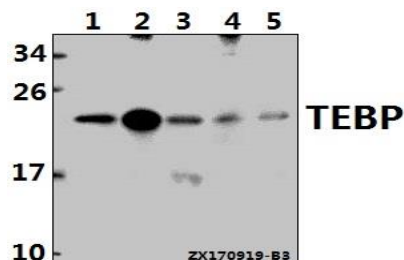
Storage&Stability:

Store at 4 °C short term. Aliquot and store at -20 °C long term. Avoid freeze-thaw cycles.

Specificity:

TEBP (K107) polyclonal antibody detects endogenous levels of TEBP protein.

DATA:



Western blot (WB) analysis of TEBP (K107) pAb at 1:500 dilution

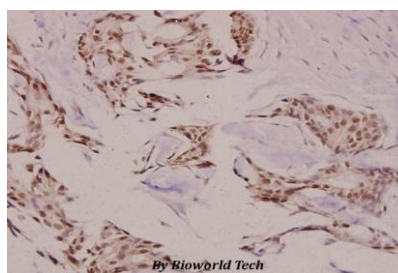
Lane1:SK-OVCAR3 whole cell lysate(40ug)

Lane2:HEK293T whole cell lysate(40ug)

Lane3:HeLa whole cell lysate(40ug)

Lane4:3T3-L1 whole cell lysate(40ug)

Lane5:C6 whole cell lysate(40ug)



Immunohistochemistry (IHC) analyzes of TEBP (K107) pAb in paraffin-embedded human breast carcinoma tissue at 1:100.

Note:

For research use only, not for use in diagnostic procedure.

Bioworld Technology, Inc.

Add: 1660 South Highway 100, Suite 500 St. Louis Park, MN 55416, USA.

Email: info@bioworld.com

Tel: 6123263284

Fax: 6122933841

Bioworld technology, co. Ltd.

Add: No 9, weidi road Qixia District Nanjing, 210046, P. R. China.

Email: info@biogot.com

Tel: 0086-025-68037686

Fax: 0086-025-68035151