

SSBP1 (Q100) polyclonal antibody

Catalog: BS3012

Host: Rabbit

Reactivity: Human

BackGround:

The single-stranded-DNA-binding proteins (SSBs) are essential for DNA function in prokaryotic and eukaryotic cells, mitochondria, phages and viruses. Mitochondrial single-stranded DNA-binding protein (mtSSB or SSBP1) is necessary for mtDNA replication. SSBP1 is a homotetramer that binds preferentially and cooperatively to single-stranded DNA. It is localized to the mitochondria in normal and neoplastic human tissue of different origin, function, and differentiation, and is likely involved in mitochondrial DNA replication.

Product:

1 mg/ml in Phosphate buffered saline (PBS) with 0.05% sodium azide, approx. pH 7.2.

Molecular Weight:

~ 17 kDa

Swiss-Prot:

Q04837

Purification&Purity:

The antibody was affinity-purified from rabbit antiserum by affinity-chromatography using epitope-specific immunogen and the purity is > 95% (by SDS-PAGE).

Applications:

WB: 1:500~1:1000

IHC: 1:50~1:200

IF: 1:50~1:200

Storage&Stability:

Store at 4 °C short term. Aliquot and store at -20 °C long term. Avoid freeze-thaw cycles.

Specificity:

SSBP1 (Q100) polyclonal antibody detects endogenous levels of SSBP1 protein.

DATA:



Western blot (WB) analysis of SSBP1 (Q100) pAb at 1:500 dilution

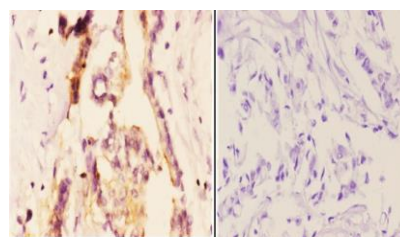
Lane1:H1792 whole cell lysate(40ug)

Lane2:PC3 whole cell lysate(40ug)

Lane3:K562 whole cell lysate(40ug)

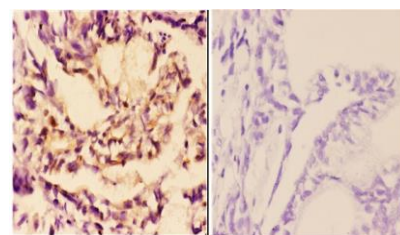
Lane4:MCF-7 whole cell lysate(40ug)

Lane5:HEK293T whole cell lysate(40ug)



BS3012
Lot CF36131

Immunohistochemistry (IHC) analyzes of SSBP1 (Q100) pAb in paraffin-embedded human breast carcinoma tissue at 1:50, showing cytoplasmic and nuclear staining. Negative control (the right) Using PBS instead of primary antibody, secondary antibody is Goat Anti-Rabbit IgG-biotin followed by avidin-peroxidase.



BS3012
Lot CF36131

Immunohistochemistry (IHC) analyzes of SSBP1 (Q100) pAb in paraffin-embedded human colon carcinoma tissue at 1:50, showing cytoplasmic and nuclear staining. Negative control (the right) Using PBS instead of primary antibody, secondary antibody is Goat Anti-Rabbit IgG-biotin

Bioworld Technology, Inc.

Add: 1660 South Highway 100, Suite 500 St. Louis Park, MN 55416, USA.

Email: info@bioworld.com

Tel: 6123263284

Fax: 6122933841

Bioworld technology, co. Ltd.

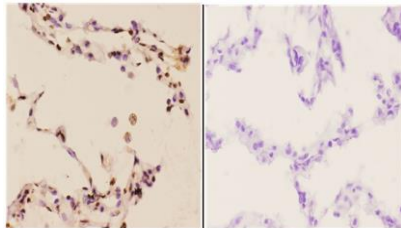
Add: No 9, weidi road Qixia District Nanjing, 210046, P. R. China.

Email: info@biogot.com

Tel: 0086-025-68037686

Fax: 0086-025-68035151

followed by avidin-peroxidase.



BS5012
Lot C36131

Immunohistochemistry (IHC) analyzes of SSBP1 (Q100) pAb in paraffin-embedded human lung carcinoma tissue at 1:50, showing cytoplasmic and nuclear staining. Negative control (the right) Using PBS instead

of primary antibody, secondary antibody is Goat Anti-Rabbit IgG-biotin followed by avidin-peroxidase.

Note:

For research use only, not for use in diagnostic procedure.

Bioworld Technology, Inc.

Add: 1660 South Highway 100, Suite 500 St. Louis Park,
MN 55416, USA.

Email: info@bioworld.com

Tel: 6123263284

Fax: 6122933841

Bioworld technology, co. Ltd.

Add: No 9, weidi road Qixia District Nanjing, 210046,
P. R. China.

Email: info@biogot.com

Tel: 0086-025-68037686

Fax: 0086-025-68035151