

TPX2 (Q330) polyclonal antibody

Catalog: BS3016

Host: Rabbit

Reactivity: Human, Mouse

BackGround:

TPX2 (targeting protein for Xklp2) is a microtubule-associated protein involved in targeting the motor protein Xklp2 to microtubules. Ran-GTP activates TPX2 for the chromatin-induced microtubule assembly during M phase. Aurora-A kinase associates with TPX2 at the spindle apparatus and may regulate TPX2 via phosphorylation during the spindle assembly. TPX2 appears to play a structural role in spindle formation. TPX2 activates Eg2 in a microtubule-dependent manner by stimulating the phosphorylation and kinase activity of Eg2. TPX2 is inactivated by binding to importin α , a nuclear import factor. Finally, the suppression of TPX2 with RNA interference causes defects in microtubule organization during mitosis.

Product:

1 mg/ml in Phosphate buffered saline (PBS) with 15 mM sodium azide, approx. pH 7.2.

Molecular Weight:

~ 88 kDa

Swiss-Prot:

Q9ULW0

Purification&Purity:

The antibody was affinity-purified from rabbit antiserum by affinity-chromatography using epitope-specific immunogen and the purity is > 95% (by SDS-PAGE).

Applications:

WB: 1:500~1:1000

IHC: 1:50~1:200

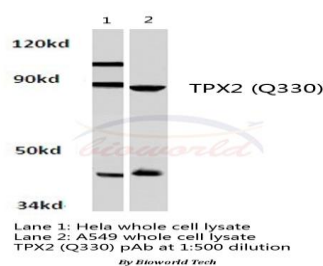
Storage&Stability:

Store at 4 °C short term. Aliquot and store at -20 °C long term. Avoid freeze-thaw cycles.

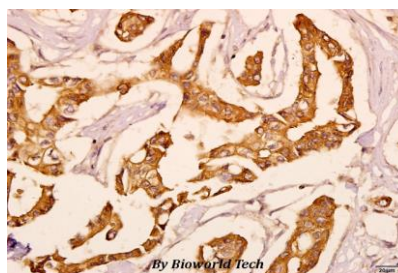
Specificity:

TPX2 (Q330) polyclonal antibody detects endogenous levels of TPX2 protein.

DATA:



Western blot (WB) analysis of TPX2 (Q330) polyclonal antibody in extracts from HeLa and A549 cells.



Immunohistochemistry (IHC) analyzes of TPX2 (Q330) pAb in paraffin-embedded human breast carcinoma tissue at 1:50.

Note:

For research use only, not for use in diagnostic procedure.

Bioworld Technology, Inc.

Add: 1660 South Highway 100, Suite 500 St. Louis Park, MN 55416, USA.

Email: info@bioworld.com

Tel: 6123263284

Fax: 6122933841

Bioworld technology, co. Ltd.

Add: No 9, weidi road Qixia District Nanjing, 210046, P. R. China.

Email: info@biogot.com

Tel: 0086-025-68037686

Fax: 0086-025-68035151