

ApoL1 (Q294) polyclonal antibody

Catalog: BS3072

Host: Rabbit

Reactivity: Human, Mouse, Rat

Background:

Apolipoproteins are protein components of plasma lipoproteins. The apolipoprotein L gene family encodes six highly homologous proteins designated apoL-I to -VI, which are associated with large high density type lipoproteins (HDL). The human apoL family maps to chromosome 22q12.1-13.1 within a 127,000-bp region. apoL has been characterized as a pancreas specific, 383-amino acid, 42 kDa protein that contains a 12-amino acid secretory signal peptide. The apoL genes have TATA-less promoters and contain putative sterol regulatory elements, suggesting that transcription of these genes may be coordinated with that of the low density lipoprotein receptor and genes in pathways involving the synthesis of triglycerides and cholesterol. apoL homologs can undergo 10 fold changes in expression during atherosclerotic changes in vascular endothelial cells, which includes the inflammatory reaction of atherosclerotic lesions.

Product:

1 mg/ml in Phosphate buffered saline (PBS) with 0.05% sodium azide, approx. pH 7.2.

Molecular Weight:

~ 44 kDa

Swiss-Prot:

O14791

Purification&Purity:

The antibody was affinity-purified from rabbit antiserum by affinity-chromatography using epitope-specific immunogen and the purity is > 95% (by SDS-PAGE).

Applications:

WB: 1:500~1:1000

IHC: 1:50~1:200

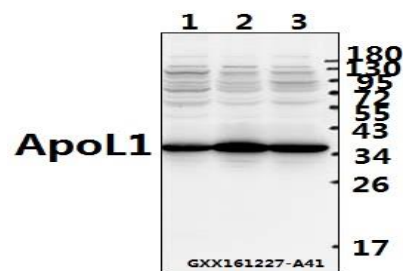
Storage&Stability:

Store at 4 °C short term. Aliquot and store at -20 °C long term. Avoid freeze-thaw cycles.

Specificity:

ApoL1 (Q294) polyclonal antibody detects endogenous levels of ApoL1 protein.

DATA:

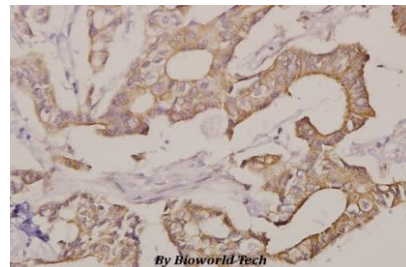


Western blot (WB) analysis of ApoL1 (Q294) polyclonal antibody at 1:500 dilution

Lane1:A549 whole cell lysate(40ug)

Lane2:HepG2 whole cell lysate(40ug)

Lane3:L02 whole cell lysate(40ug)



Immunohistochemistry (IHC) analyzes of ApoL1 (Q294) pAb in paraffin-embedded human breast carcinoma tissue at 1:50.

Note:

For research use only, not for use in diagnostic procedure.

Bioworld Technology, Inc.

Add: 1660 South Highway 100, Suite 500 St. Louis Park, MN 55416, USA.

Email: info@bioworld.com

Tel: 6123263284

Fax: 6122933841

Bioworld technology, co. Ltd.

Add: No 9, weidi road Qixia District Nanjing, 210046, P. R. China.

Email: info@biogot.com

Tel: 0086-025-68037686

Fax: 0086-025-68035151