

KDEL Receptor 3 (L95) polyclonal antibody

Catalog: BS3124

Host: Rabbit

Reactivity: Human, Mouse, Rat

Background:

Soluble proteins in the endoplasmic reticulum (ER) contain a specific carboxy terminal sequence KDEL (Lys-Asp-Glu-Leu), and include the coat proteins required for vesicle budding from the ER, proteins that form retrograde vesicles on post-ER compartments, and integral membrane proteins that target vesicles to their correct destination. The retention of these soluble proteins in the ER depends on the interaction of the KDEL sequence with the corresponding KDEL receptor, also designated ERD2, in the Golgi apparatus. When KDEL proteins reach the Golgi complex, they are recognized by the KDEL receptor and transported retrograde in COPI-coated vesicles back to the ER. The small GTPase ADP-ribosylation factor 1 (ARF1), a regulator of vesicle transport, interacts with the KDEL receptor.

Product:

Rabbit IgG, 1mg/ml in PBS with 0.02% sodium azide, 50% glycerol, pH7.2

Molecular Weight:

~ 25 kDa

Swiss-Prot:

O43731

Purification&Purity:

The antibody was affinity-purified from rabbit antiserum by affinity-chromatography using epitope-specific im-

munogen and the purity is > 95% (by SDS-PAGE).

Applications:

IHC: 1:50~1:200

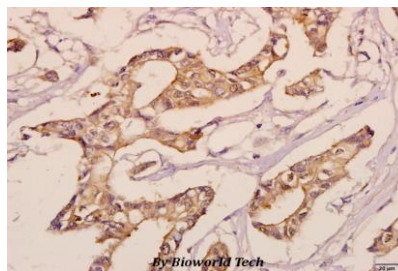
Storage&Stability:

Store at 4 °C short term. Aliquot and store at -20 °C long term. Avoid freeze-thaw cycles.

Specificity:

KDEL Receptor 3 (L95) polyclonal antibody detects endogenous levels of KDEL Receptor 3 protein.

DATA:



Immunohistochemistry (IHC) analyzes of KDEL Receptor 3 (L95) pAb in paraffin-embedded human breast carcinoma tissue at 1:50.

Note:

For research use only, not for use in diagnostic procedure.

Bioworld Technology, Inc.

Add: 1660 South Highway 100, Suite 500 St. Louis Park, MN 55416, USA.

Email: info@bioworld.com

Tel: 6123263284

Fax: 6122933841

Bioworld technology, co. Ltd.

Add: No 9, weidi road Qixia District Nanjing, 210046, P. R. China.

Email: info@biogot.com

Tel: 0086-025-68037686

Fax: 0086-025-68035151