

## HLA-DO $\alpha$ (V111) polyclonal antibody

Catalog: BS3134

Host: Rabbit

Reactivity: Human, Mouse, Rat

### BackGround:

Reacts with HLA-DO, a heterodimer formed by DN $\alpha$  and DO $\beta$  subunits in B cells. DN $\alpha$  and DO $\beta$  are the products of the non-classical class II genes, HLA-DNA and HLA-DOB, respectively. DO forms tight complexes with DM in the endoplasmic reticulum and is thereby sorted to lysosomal vesicles during antigen processing and presentation. It is tightly associated with DM and it is selectively expressed on antigen-presenting cells, such as B cells, dendritic cells and thymic epithelial cells. DO can enhance the efficiency of peptide loading and has been found to stabilize DM at low pH, preserving its chaperon activity. DO-DM complexes are more efficient than DM in protecting empty DR molecules. Reports describe DO as a co-chaperone of DM. This antibody has also been reported to be suitable for western blot and immunoprecipitation.

### Product:

Rabbit IgG, 1mg/ml in PBS with 0.02% sodium azide, 50% glycerol, pH7.2

### Molecular Weight:

~ 34 kDa

### Swiss-Prot:

P06340

### Purification&Purity:

The antibody was affinity-purified from rabbit antiserum

by affinity-chromatography using epitope-specific immunogen and the purity is > 95% (by SDS-PAGE).

### Applications:

IHC: 1:50~1:200

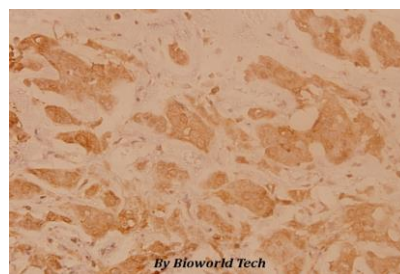
### Storage&Stability:

Store at 4 °C short term. Aliquot and store at -20 °C long term. Avoid freeze-thaw cycles.

### Specificity:

HLA-DO $\alpha$  (V111) polyclonal antibody detects endogenous levels of HLA-DO $\alpha$  protein.

### DATA:



Immunohistochemistry (IHC) analyzes of HLA-DO $\alpha$  (V111) pAb in paraffin-embedded human breast carcinoma tissue at 1:100.

### Note:

For research use only, not for use in diagnostic procedure.

### Bioworld Technology, Inc.

Add: 1660 South Highway 100, Suite 500 St. Louis Park, MN 55416, USA.

Email: [info@bioworld.com](mailto:info@bioworld.com)

Tel: 6123263284

Fax: 6122933841

### Bioworld technology, co. Ltd.

Add: No 9, weidi road Qixia District Nanjing, 210046, P. R. China.

Email: [info@biogot.com](mailto:info@biogot.com)

Tel: 0086-025-68037686

Fax: 0086-025-68035151