

EDG-3 (L41) polyclonal antibody

Catalog: BS3161

Host: Rabbit

Reactivity: Human, Mouse, Rat

BackGround:

EDG3 belongs to a family of G-protein coupled receptors whose ligands are lysophospholipids. The ligand for EDG3 is sphingosine-1-phosphate. There are eight known members of the EDG receptor family and they are implicated in mediating growth-related effects such as induction of cellular proliferation, alterations in differentiation and survival, and suppression of apoptosis. They also evoke cellular effector functions that are dependent on cytoskeletal responses such as contraction, secretion, adhesion and chemotaxis. EDG receptors are developmentally regulated and differ in tissue distribution. They couple to multiple types of G proteins to signal through ras and MAP kinase, rho, phospholipase C, and several protein tyrosine kinases. EDG3 is expressed in heart, placenta, kidney, and liver tissue.

Product:

1 mg/ml in Phosphate buffered saline (PBS) with 0.05% sodium azide, approx. pH 7.2.

Molecular Weight:

~ 42 kDa

Swiss-Prot:

Q99500

Purification&Purity:

The antibody was affinity-purified from rabbit antiserum by affinity-chromatography using epitope-specific immunogen and the purity is > 95% (by SDS-PAGE).

Applications:

WB: 1:500~1:1000

IF: 1:50~1:200

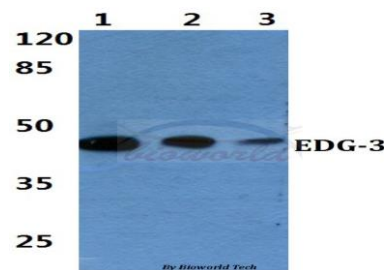
Storage&Stability:

Store at 4 °C short term. Aliquot and store at -20 °C long term. Avoid freeze-thaw cycles.

Specificity:

EDG-3 (L41) polyclonal antibody detects endogenous levels of EDG-3 protein.

DATA:



Western blot (WB) analysis of EDG-3 (L41) polyclonal antibody at 1:500 dilution

Lane1:MCF-7 cell lysate

Lane2:Mouse spleen tissue lysate

Lane3:Rat spleen tissue lysate

Note:

For research use only, not for use in diagnostic procedure.

Bioworld Technology, Inc.

Add: 1660 South Highway 100, Suite 500 St. Louis Park, MN 55416, USA.

Email: info@bioworld.com

Tel: 6123263284

Fax: 6122933841

Bioworld technology, co. Ltd.

Add: No 9, weidi road Qixia District Nanjing, 210046, P. R. China.

Email: info@biogot.com

Tel: 0086-025-68037686

Fax: 0086-025-68035151