

C1q-B (V193) polyclonal antibody

Catalog: BS3288

Host: Rabbit

Reactivity: Human, Mouse, Rat

BackGround:

C1q, a subcomponent of the classical complement pathway, mediates its activation and thereby plays an important role in immune response. The presence of receptors for C1q on effector cells modulates its activity, which may be antibody-dependent or independent. Macrophages are the primary source of C1q, and anti-inflammatory drugs as well as cytokines differentially regulate expression of the mRNA as well as the protein. However, its ability to modulate the interaction of platelets with collagen and immune complexes suggests C1q influences homeostasis as well as other immune activities, and perhaps thrombotic complications resulting from immune injury.

Product:

1 mg/ml in Phosphate buffered saline (PBS) with 0.05% sodium azide, approx. pH 7.2.

Molecular Weight:

~ 28 kDa

Swiss-Prot:

P02746

Purification&Purity:

The antibody was affinity-purified from rabbit antiserum by affinity-chromatography using epitope-specific immunogen and the purity is > 95% (by SDS-PAGE).

Applications:

WB: 1:500~1:1000

IF: 1:50~1:200

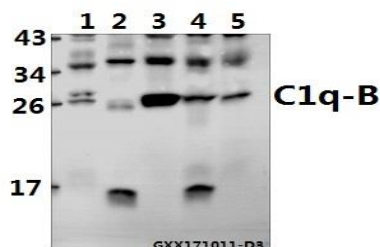
Storage&Stability:

Store at 4 °C short term. Aliquot and store at -20 °C long term. Avoid freeze-thaw cycles.

Specificity:

C1q-B (V193) polyclonal antibody detects endogenous levels of C1q-B protein.

DATA:



Western blot (WB) analysis of C1q-B (V193) pAb at 1:500 dilution

Lane1:HEK293T whole cell lysate(40ug)

Lane2:HepG2 whole cell lysate(40ug)

Lane3:The Kidney tissue lysate of Mouse(40ug)

Lane4:PC12 whole cell lysate(40ug)

Lane5:CT26 whole cell lysate(40ug)

Note:

For research use only, not for use in diagnostic procedure.

Bioworld Technology, Inc.

Add: 1660 South Highway 100, Suite 500 St. Louis Park, MN 55416, USA.

Email: info@bioworld.com

Tel: 6123263284

Fax: 6122933841

Bioworld technology, co. Ltd.

Add: No 9, weidi road Qixia District Nanjing, 210046, P. R. China.

Email: info@biogot.com

Tel: 0086-025-68037686

Fax: 0086-025-68035151