

MRP-S22 (R263) polyclonal antibody

Catalog: BS3325

Host: Rabbit

Reactivity: Human

BackGround:

The mitoribosomes are composed of a 4:1 ratio of protein to RNA, with the proteins forming two subunits, the 28S subunit and the 39S subunit. Across species, the proteins that make up the mitoribosome subunits vary greatly in sequence, preventing easy recognition by sequence homology. MRP-S22 (mitochondrial 28S ribosomal protein S22), also known as S22mt, is a 360 amino acid mitochondrial ribosomal protein. Localized to the mitochondria, MRP-S22 is present in the 28S subunit of the mitoribosomes. Defects of MRP-S22 are the cause of combined oxidative phosphorylation deficiency type 5 (COXPD5). COXPD5 is an antenatal mitochondrial disease characterized by hypotonia, edema, cardiomyopathy and tubulopathy.

Product:

Rabbit IgG, 1mg/ml in PBS with 0.02% sodium azide, 50% glycerol, pH7.2

Molecular Weight:

~ 41 kDa

Swiss-Prot:

P82650

Purification&Purity:

The antibody was affinity-purified from rabbit antiserum by affinity-chromatography using epitope-specific immunogen and the purity is > 95% (by SDS-PAGE).

Applications:

IHC: 1:50~1:200

IF: 1:50~1:200

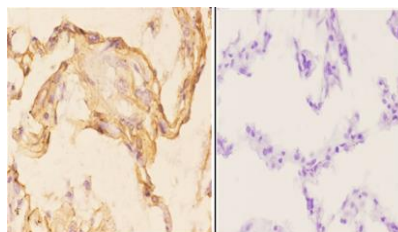
Storage&Stability:

Store at 4 °C short term. Aliquot and store at -20 °C long term. Avoid freeze-thaw cycles.

Specificity:

MRP-S22 (R263) polyclonal antibody detects endogenous levels of MRP-S22 protein.

DATA:



BS3325
Lot CJ36131

Immunohistochemistry (IHC) analyzes of MRP-S22 (R263) pAb in paraffin-embedded human lung carcinoma tissue at 1:50, showing Cytoplasm staining. Negative control (the right) Using PBS instead of primary antibody, secondary antibody is Goat Anti-Rabbit IgG-biotin followed by avidin-peroxidase.

Note:

For research use only, not for use in diagnostic procedure.

Bioworld Technology, Inc.

Add: 1660 South Highway 100, Suite 500 St. Louis Park, MN 55416, USA.

Email: info@bioworld.com

Tel: 6123263284

Fax: 6122933841

Bioworld technology, co. Ltd.

Add: No 9, weidi road Qixia District Nanjing, 210046, P. R. China.

Email: info@biogot.com

Tel: 0086-025-68037686

Fax: 0086-025-68035151